

 **BOEING**
COMPONENT
MAINTENANCE MANUAL

TO: ALL HOLDERS OF LAVATORY AND FLIGHT ATTENDANT OXYGEN MODULE ASSEMBLY
COMPONENT MAINTENANCE MANUAL 35-21-21

REVISION NO. 15 DATED NOV 01/01

HIGHLIGHTS

Pages which have been added or revised are outlined below together with the highlights of the revision. Remove and insert the affected pages as listed and enter Revision No. and date on the Record of Revision Sheet.

CHAPTER/SECTION

AND PAGE NO.

TR & SB RECORD

1

703

DESCRIPTION OF CHANGE

Added a CAUTION note to make sure the release pin is in the release pin hole, not the safety pin hole, per SB 767-35-0043, 767-35-0044 and AD 2001-10-14.

35-21-21

HIGHLIGHTS

01.1

Page 1

Nov 01/01

LAVATORY AND FLIGHT ATTENDANT
OXYGEN MODULE ASSEMBLY

PART NUMBERS 417T4202-3,-6 THRU -9,-103,-106,
-108,-109,-203,-206 THRU
THRU -209,-403,-406,-413,
-416,-419,-423,-426,-429,
-436

(SP SUFFIX ON EACH DASH NUMBER)

COMPONENT MAINTENANCE MANUAL
WITH
ILLUSTRATED PARTS LIST

35-21-21

TITLE PAGE

Page 1

Jul 01/98

01.1



REVISION RECORD

- Retain this record in front of manual. On receipt of revision, insert revised pages in the manual, and enter revision number, date inserted and initial.

REVISION NUMBER	REVISION DATE	DATE FILED	BY	REVISION NUMBER	REVISION DATE	DATE FILED	BY


BOEING
 COMPONENT
 MAINTENANCE MANUAL

PAGE	DATE	CODE	PAGE	DATE	CODE
35-21-21			CHECK		
			501	SEP 01/96	01.1
			502	SEP 01/96	01.1
TITLE PAGE			REPAIR-GENERAL		
1	JUL 01/98	01.1	601	JUL 10/87	01.1
2	BLANK		602	BLANK	
REVISION RECORD			REPAIR 1-1		
1	JUL 10/83	01	601	MAR 01/97	01.1
2	BLANK		602	JUL 01/01	01.1
TR & SB RECORD			603	SEP 01/96	01.1
*1	NOV 01/01	01.1	604	SEP 01/96	01.1
2	BLANK		REPAIR 2-1		
LIST OF EFFECTIVE PAGES			601	SEP 01/96	01.1
*1	NOV 01/01	01	602	BLANK	
THRU LAST PAGE			REPAIR 3-1		
CONTENTS			601	SEP 01/96	01.1
1	JUL 10/83	01	602	BLANK	
2	BLANK		ASSEMBLY		
INTRODUCTION			701	SEP 01/96	01.1
1	JUL 10/87	01.1	702	SEP 01/96	01.1
2	BLANK		*703	NOV 01/01	01.1
DESCRIPTION & OPERATION			704	SEP 01/96	01.1
1	JUL 10/87	01.1	705	SEP 01/96	01.1
2	BLANK		706	SEP 01/96	01.1
TESTING & TROUBLE SHOOTING			707	SEP 01/96	01.1
101	JUL 10/87	01.1	708	BLANK	
102	BLANK		SPECIAL TOOLS		
DISASSEMBLY			901	SEP 01/96	01.1
301	SEP 01/96	01.1	902	BLANK	
302	SEP 01/96	01.1	ILLUSTRATED PARTS LIST		
CLEANING			1001	JUL 10/83	01
401	JUL 10/87	01.1	1002	JUL 01/98	01.1
402	BLANK		1003	JUL 01/98	01.1
			1004	JUL 01/98	01.1
			1005	JUL 01/98	01.1
			1006	JUL 01/98	01.1

* = REVISED, ADDED OR DELETED

35-21-21

EFFECTIVE PAGES

CONTINUED Page 1

01 Nov 01/01

PAGE	DATE	CODE	PAGE	DATE	CODE
ILLUSTRATED PARTS LIST		CONT.	ILLUSTRATED PARTS LIST		CONT.
1007	JUL 01/98	01.1	1049	JUL 01/98	01.1
1008	JUL 01/98	01.1	1050	JUL 01/98	01.1
1009	JUL 01/98	01.1	1051	JUL 01/98	01.1
1010	JUL 01/98	01.1	1052	JUL 01/98	01.1
1011	JUL 01/98	01.1	1053	JUL 01/98	01.1
1012	JUL 01/98	01.1	1054	JUL 01/98	01.1
1013	JUL 01/98	01.1	1055	JUL 01/98	01.1
1014	BLANK		1056	JUL 01/98	01.1
1015	JUL 01/98	01.1			
1016	JUL 01/98	01.1			
1017	JUL 01/98	01.1			
1018	JUL 01/98	01.1			
1019	JUL 01/98	01.1			
1020	JUL 01/98	01.1			
1021	JUL 01/98	01.1			
1022	JUL 01/98	01.1			
1023	JUL 01/98	01.1			
1024	JUL 01/98	01.1			
1025	JUL 01/98	01.1			
1026	JUL 01/98	01.1			
1027	JUL 01/98	01.1			
1028	JUL 01/98	01.1			
1029	JUL 01/98	01.1			
1030	JUL 01/98	01.1			
1031	JUL 01/98	01.1			
1032	JUL 01/98	01.1			
1033	JUL 01/98	01.1			
1034	JUL 01/98	01.1			
1035	JUL 01/98	01.1			
1036	JUL 01/98	01.1			
1037	JUL 01/98	01.1			
1038	BLANK				
1039	JUL 01/98	01.1			
1040	JUL 01/98	01.1			
1041	JUL 01/98	01.1			
1042	JUL 01/98	01.1			
1043	JUL 01/98	01.1			
1044	JUL 01/98	01.1			
1045	JUL 01/98	01.1			
1046	JUL 01/98	01.1			
1047	JUL 01/98	01.1			
1048	JUL 01/98	01.1			

* = REVISED, ADDED OR DELETED

35-21-21

EFFECTIVE PAGES
 LAST PAGE Page 2
 01 Nov 01/01



TABLE OF CONTENTS

<u>Paragraph Title</u>	<u>Page</u>
Description and Operation.	1
Testing and Trouble Shooting	101
Disassembly.	301
Cleaning	401
Check.	501
Repair	601
Assembly	701
Fits and Clearances (Not Applicable)	
Special Tools.	901
Illustrated Parts List	1001

35-21-21



INTRODUCTION

The instructions in this manual provide the information necessary to perform maintenance functions ranging from simple checks and replacement to complete shop-type repair.

This manual is divided into separate sections:

- | | |
|--|------------------------------|
| 1. Title Page | 4. List of Effective Pages |
| 2. Record of Revisions | 5. Table of Contents |
| 3. Temporary Revision &
Service Bulletin Record | 6. Introduction |
| | 7. Procedures & IPL Sections |

Refer to the Table of Contents for the page location of applicable sections. An asterisked flagnote *[] in place of the page number indicates that no special instructions are provided since the function can be performed using standard industry practices.

The beginning of the REPAIR section includes a list of the separate repairs, a list of applicable standard Boeing practices, and an explanation of the True Position Dimensioning symbols used.

An explanation of the use of the Illustrated Parts List is provided in the Introduction to that section.

All weights and measurements used in the manual are in English units, unless otherwise stated. When metric equivalents are given they will be in parentheses following the English units.

Design changes, optional parts, configuration differences and Service Bulletin modifications create alternate part numbers. These are identified in the Illustrated Parts List (IPL) by adding an alphabetical character to the basic item number. The resulting item number is called an alpha-variant. Throughout the manual, IPL basic item number references also apply to alpha-variants unless otherwise indicated.

Verification:

Testing/TS	-- Aug 6/86
Disassembly	-- Aug 6/86
Assembly	-- Aug 6/86

35-21-21

INTRODUCTION

01.1

Page 1

Jul 10/87

LAVATORY AND FLIGHT ATTENDANT OXYGEN MODULE ASSEMBLYDESCRIPTION AND OPERATION1. Description

A. The lavatory oxygen module assembly consists of an oxygen generator clamped in a block on the side of a box containing two oxygen masks. Each mask is connected to the generator outlet by plastic tubing and to the generator ignition unit by a lanyard, attached to a release cable. On some units, a weighted streamer is attached to remind users to pull masks into position for usage. A panel door supports the masks until release by an electromechanical door latch actuator.

2. Operation

A. Depressurization of the airplane or manual operation of a switch automatically releases the masks to fall as limited by their lanyards. When the first mask is pulled into position for usage, the lanyard pulls a release cable which triggers the oxygen generator to start oxygen flow to the masks.

3. Leading Particulars (Approximate)

Length -- 10 inches
Height -- 4 inches
Width -- 9 inches
Weight -- 6 pounds

35-21-21

DESCRIPTION & OPERATION

01.1

Page 1

Jul 10/87

TESTING/TROUBLE SHOOTING1. Test Equipment

- A. Power supply -- 18v dc.

CAUTION: DOOR PANEL IS VISIBLE FROM CABIN INTERIOR. SPECIAL CARE MUST BE TAKEN TO PREVENT MARRING VISIBLE SURFACES.

2. Bench test module as follows:

- A. Restrain door so that it will open without deploying oxygen masks.
- B. Manually operate latch. Door should open smoothly. If not, adjust as necessary.
- C. Close door. It should latch cleanly, without binding. Adjust if necessary.

- D. Energize door latch actuator with 18v dc and check that door opens.

NOTE: If any adjustments are made, repeat steps A. thru D.

- E. Reset actuator by rotating latch against plunger until plunger engages.
- F. Close and latch module door.

35-21-21

TESTING & TROUBLE SHOOTING

01.1

Page 101

Jul 10/87

**BOEING**
COMPONENT
MAINTENANCE MANUALDISASSEMBLY

CAUTION: THE DOOR PANEL CAN BE SEEN FROM THE CABIN INTERIOR. BE CAREFUL NOT TO DAMAGE SURFACES THE PASSENGERS WILL SEE.

1. Disassembly (IPL Fig. 1)

NOTE: Disassemble component only as necessary to complete fault isolation, determine serviceability of parts, perform required repairs, and restore unit to serviceable condition.

CAUTION: DOOR PANEL IS VISIBLE FROM CABIN INTERIOR. SPECIAL CARE MUST BE TAKEN TO PREVENT MARRING VISIBLE SURFACES.

CAUTION: DO NOT DISASSEMBLE THE BOX STRUCTURE, BECAUSE COMPLEX AND EXPENSIVE ASSEMBLY JIGS ARE NECESSARY TO GET THE CORRECT DIMENSIONAL TOLERANCES.

A. Position unit so door panel faces up, to prevent oxygen mask deployment when door is opened.

B. Using tape or a soft lead pencil, mark location of door relative to box before removal to facilitate reattachment in correct position.

C. Unlatch and open the door panel.

WARNING: DO NOT ALLOW OIL, GREASE, FLAMMABLE SOLVENTS, DUST, LINT, FINE METAL FILINGS, OR OTHER COMBUSTIBLE MATERIAL TO CONTAMINATE PARTS THAT WILL BE EXPOSED TO OXYGEN. COMBUSTIBLE MATERIAL MAY IGNITE AND RESULT IN AN EXPLOSION WHEN EXPOSED TO OXYGEN.

D. Remove oxygen masks.

(1) Detach the tubing or flex hose with circle clamp from generator outlet nozzle(s). Pull the tubing or hose back through the grommets as applicable.

(2) If applicable, disconnect the oxygen mask tubing from the manifold. Remove the manifold mounting screws, washers and the manifold with attached flex hose.

WARNING: THE OXYGEN GENERATOR IS A PYROTECHNIC, HIGH-HEAT-PRODUCING UNIT WHICH CAN CAUSE SERIOUS BURNS. TO PREVENT SERIOUS INJURY TO PERSONNEL, BE SURE THAT A35001-8 SAFETY PIN WITH WARNING FLAG (PART OF A35001-10, RETRACTION EQUIPMENT) IS INSTALLED ON UNACTIVATED GENERATOR.

(3) Remove the release pin from the generator ignition unit.

35-21-21

DISASSEMBLY

01.1

Page 301

Sep 01/96

(4) Remove oxygen masks (with attached streamer).

NOTE: Do not disassemble oxygen masks unless necessary for repair or replacement. Masks are sealed assemblies. Do not detach streamer or disassemble it unless necessary for repair or replacement.

E. Remove screws, washers and door panel.

F. Remove screws, washers and oxygen generator with attached clamps.

G. Remove the actuator.

(1) Remove the connector per Chapter 20 of the Wiring Diagram Manual. Remove red (power) wire from connector pin 1, and green (ground) wire from pin 2.

(2) Pull the actuator wires through the grommet.

(3) Remove mounting screw, washers, nut, and actuator

H. Remove mounting screws, washers, release cable, and door latch.

I. Generator clamps.

(1) Remove locking pin, open the latches, and remove the oxygen generator.

(2) Remove pins, strap, and strap cover.

(3) Remove screw, strap cover, and strap.

35-21-21

DISASSEMBLY

01.1

Page 302

Sep 01/96



CLEANING

CAUTION: USE ONLY LISTED CLEANING MATERIALS. USE OF OTHER MATERIALS MAY CAUSE INSTANTANEOUS AND VISUALLY-UNDETECTABLE DAMAGE.

1. Clean all decorative plastic parts per Cleaning of Interior Painted and Plastic Parts in 20-30-03.

WARNING: DO NOT ALLOW OIL, GREASE, FLAMMABLE SOLVENTS, DUST, LINT, FINE METAL FILINGS, OR OTHER COMBUSTIBLE MATERIALS TO CONTAMINATE PARTS THAT WILL BE EXPOSED TO OXYGEN. COMBUSTIBLE MATERIAL MAY IGNITE AND RESULT IN AN EXPLOSION WHEN EXPOSED TO OXYGEN.

2. Clean all vendor supplied oxygen system components per applicable vendor's instructions.

3. Vapor degrease all oxygen system tubing and fittings per 20-30-03.

35-21-21

CLEANING
Page 401
Jul 10/87

01.1

CHECK

- |1. Examine all parts for defects with standard industry practices.
- |2. Make a check of the door springs per Fig. 501.

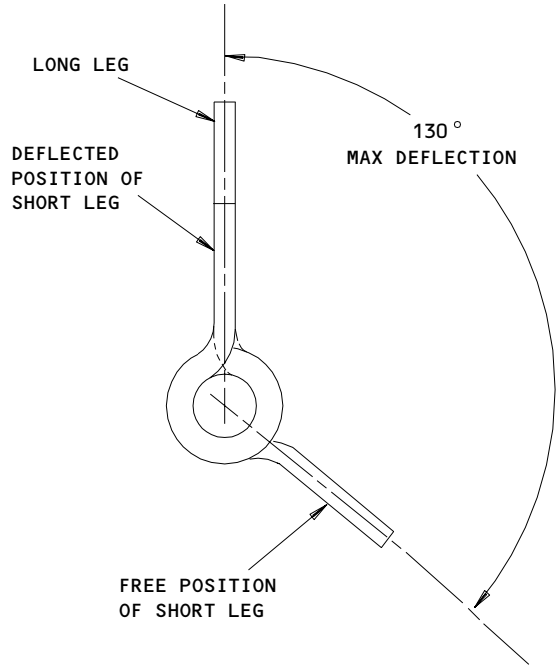
35-21-21

CHECK

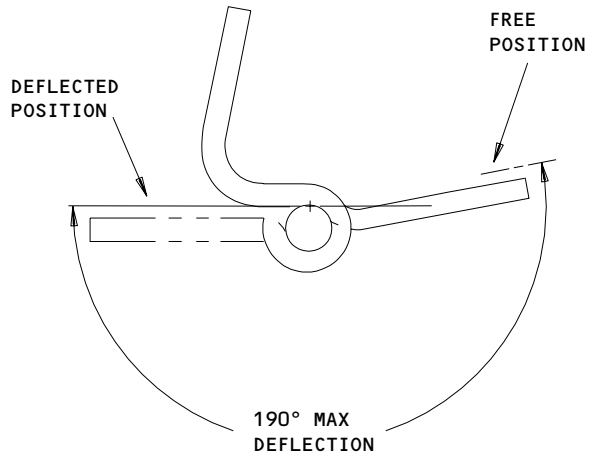
01.1

Page 501

Sep 01/96



417T4303-2



417T4303-3

SPRING (IPL FIG. 1)	MAX DEFLECTION	MAX MOMENT (LB-IN)
417T4303-2	130°	0.45 - 0.55
417T4303-3	190°	0.90 - 1.10

Spring Check Data
 Figure 501

35-21-21

CHECK
 Page 502
 Sep 01/96

01.1

REPAIR – GENERAL1. Content

- A. Repair, refinish and replacement procedures, as applicable, are included in separate repair sections as follows:

<u>P/N</u>	<u>NAME</u>	<u>REPAIR</u>
417T4205	OXYGEN MASK ASSY	1-1
--	MISCELLANEOUS PARTS REFINISH	2-1
--	MISCELLANEOUS PARTS REPLACEMENT	3-1

2. Standard Practices

- A. Refer to the following standard practices, as applicable, for details of procedures in individual repairs.

20-30-02	Stripping of Protective Finishes
20-30-03	General Cleaning Procedures
20-41-01	Decoding Table for Boeing Finish Codes
20-42-02	Application of Chemical and Solvent Resistant Finishes
20-42-05	Bright Cadmium Plating
20-50-10	Application of Stencils, Insignia, Silkscreen, Part Numbering, and Identification Markings
20-50-12	Application of Adhesives

3. Materials and Equipment

NOTE: Equivalent substitutes may be used.

- A. Primer -- BMS 10-11 type 1 (Ref 20-60-02)
- B. Adhesive -- Type 60 (Ref 20-50-12)
- C. Thread -- MIL-T-7807, type 1 white
- D. Enamel -- MIL-E-5556, color 37038 (Ref 20-60-02)
- E. Crimping Tool -- 51-C-887 (V76691)

35-21-21

REPAIR-GENERAL

01.1

Page 601

Jul 10/87

OXYGEN MASK ASSEMBLY – REPAIR 1-1

417T4205

NOTE: Refer to REPAIR-GEN for list of applicable standard practices. Refer to IPL Fig. 1 or 2 for item numbers.

1. Lanyard Replacement (Fig. 601)

A. Mask 417T4205-1

- (1) Remove the old lanyard with its eyelet fastener from the mask.
- (2) Remove the ring from the lanyard.
- (3) Install a new eyelet on one end of a replacement lanyard. Install the ring on the other end of the lanyard with the clamp to get the installed length of lanyard as shown.
- (4) Cut and heat seal the free ends of the cord.
- (5) Give the unit a load test per par. 3.

B. Masks 417T4205-41, -71

- (1) Disconnect the detaching snaphook from the clip. Remove the lanyard from the mask.
- (2) Remove ring and snaphook from the old lanyard.
- (3) Attach the snaphook and ring to the ends of the replacement lanyard with clamps to get the installed length of lanyard as shown, when the snaphook is back on the mask.
- (4) Cut and heat seal the free ends of the cord.

35-21-21

REPAIR 1-1

01.1

Page 601

Mar 01/97

(5) Give the unit a load test per par. 3.

C. Mask 417T4205-52

(1) Remove the snaphook from the retainer loop. Remove the lanyard from the retainer loop.

(2) Remove ring and snaphook from the old lanyard.

(3) Attach the snaphook and ring to ends of the replacement lanyard with the clamps to get the installed length of lanyard with retainer loop slid onto tubing to position shown.

(4) Cut and heat seal the free ends of the cord.

(5) Give the unit a load test per par. 3.

2. Headstrap Replacement (Fig. 601)

A. Remove the old headstrap.

B. Install a replacement headstrap with its clamps and clips.

3. Lanyard Test

A. Hang the mask by the lanyard from a hook or peg, or attach the free end of the lanyard to an equivalent object.

B. Attach a force gage which can measure 30 pounds, or a 30-pound weight, to the ring at the mask faceplate.

C. Apply the force or weight to the ring as a static load. Apply all of the load in 5 seconds or less. Hold the load for 2 or 3 seconds, then release.

D. Make sure the lanyard parts stay together.

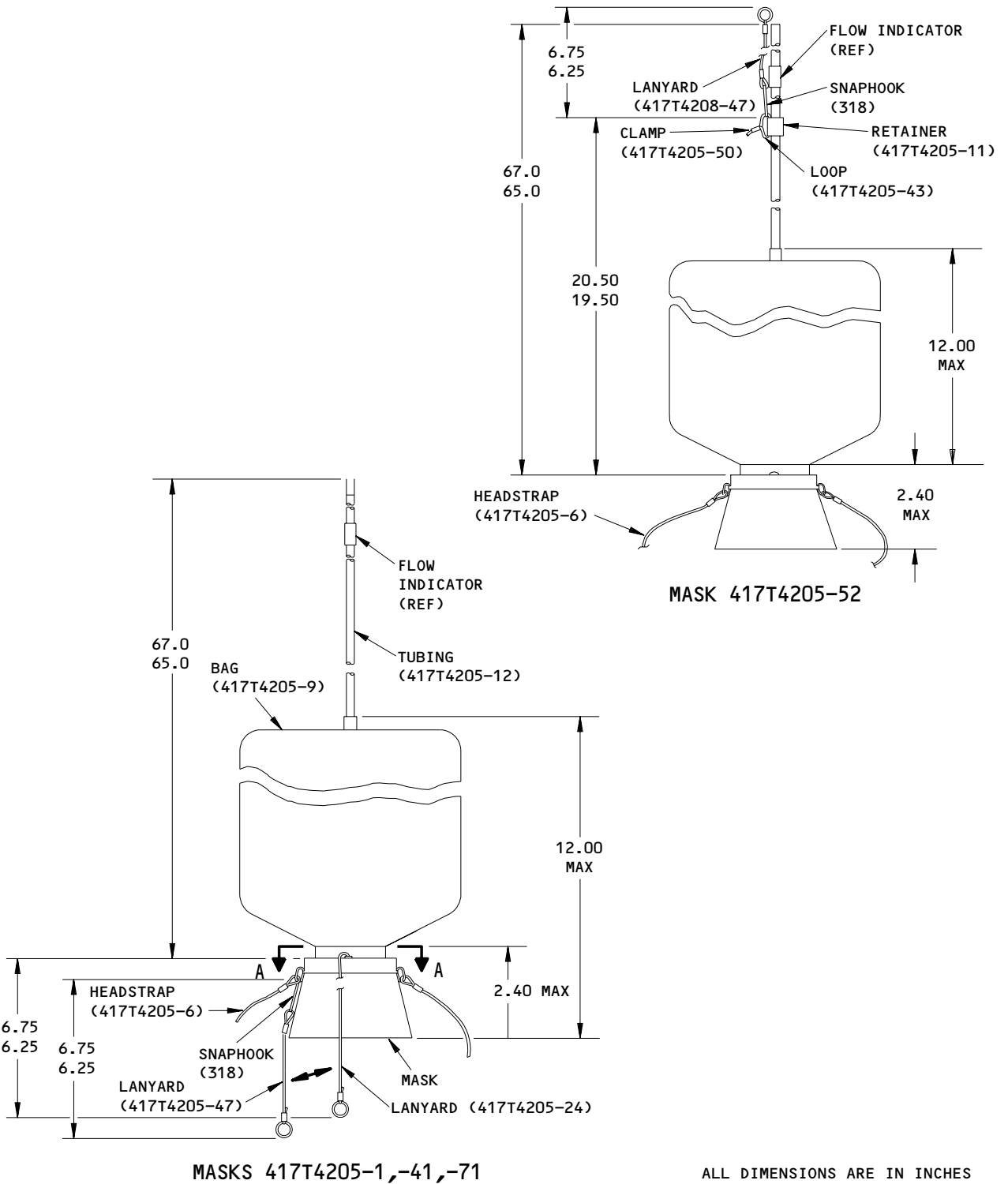
35-21-21

REPAIR 1-1

01.1

Page 602

Jul 01/01



ALL DIMENSIONS ARE IN INCHES

Oxygen Mask Details
 Figure 601 (Sheet 1)

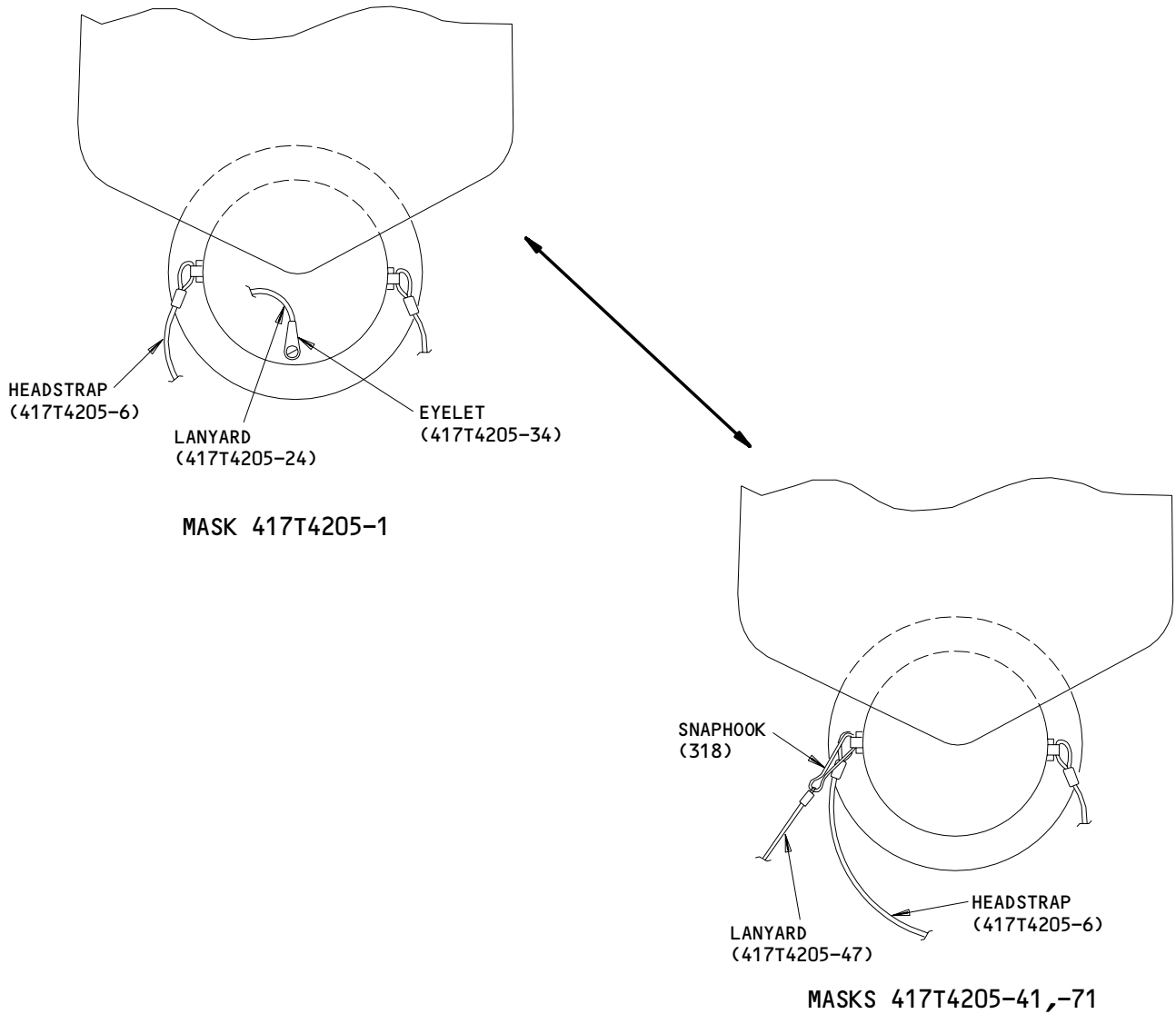
35-21-21

REPAIR 1-1

01.1

Page 603

Sep 01/96



A-A

Oxygen Mask Details
Figure 601 (Sheet 2)

35-21-21

REPAIR 1-1

Page 604

Sep 01/96

01.1

MISCELLANEOUS PARTS REFINISH – REPAIR 2-1

1. Repair of these parts is only replacement of the original finish. Refer to REPAIR-GEN for a list of applicable standard practices.

NAME AND PART NO.	MATERIAL	FINISH
Box 417T4252-series parts	Al alloy	Chemical treat and apply BMS 10-11 type 1 primer (F-18.06).
Springs 417T4303-2, -3	CRES 302	Apply BMS 10-11 type 1 primer (F-20.03).
Pin 417T4307-1, -2 Stop 417T4308-1	Al alloy	Passivate (F-17.09) all over.

Refinish Details
 Figure 601

35-21-21

REPAIR 2-1

01.1

Page 601

Sep 01/96

MISCELLANEOUS PARTS REPLACEMENT – REPAIR 3-1

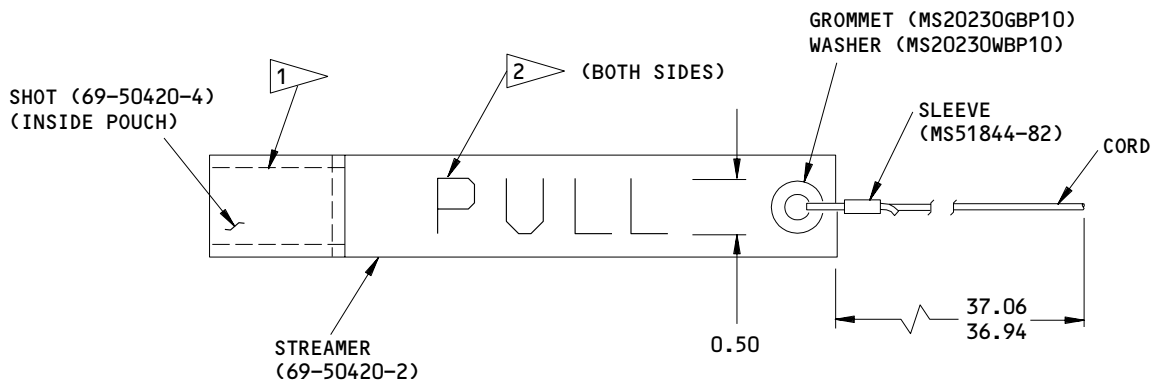
NOTE: Refer to REPAIR-GEN for list of applicable standard practices. Refer to IPL Fig. 1 for item numbers.

1. Grommet Replacement

- A. Remove the bad grommets.
- B. Bond replacement grommets to the box with type 60 adhesive per 20-50-12.

2. Streamer Parts Replacement (Fig. 601)

- A. Replace streamer parts as shown.



1 STITCH 7 PER INCH, WITH MIL-7-7807 TYPE 1 WHITE THREAD, TO CONTAIN SHOT (69-50420-4).

2 STENCIL LETTERS WITH ENAMEL MIL-E-5556, COLOR 37038.

3 CRIMP WITH TOOL 51-C-887

ALL DIMENSIONS ARE IN INCHES

417T4263-1
 Streamer Parts Replacement
 Figure 601

35-21-21

REPAIR 3-1

01.1

Page 601

Sep 01/96

ASSEMBLY1. Materials and Equipment

NOTE: Equivalent substitutes can be used.

A. Protective Tape -- Permacel type 95 (Ref 20-60-04)

B. Crimping Tool -- 51-C-887 (V76691)

2. Assembly (IPL Fig. 1 or 2)

A. Insert the latch pin, through spring, latch mount, and latch.

B. Generator clamps.

(1) Attach the strap cover and the strap to the block.

CAUTION: DO NOT PUSH ON THE PINS. THIS BLOCK COULD BREAK.

(2) Strap pins.

(a) Put the strap into the strap cover and press the pin into the block.

(b) Press the other pin into the block. Make sure the ends of these are no more than 0.06 inch from the sides of the block.

C. Door latch actuator.

(1) Attach the actuator to the box with the mounting screw, washers, and nut.

(2) Pull the actuator wires through the grommet.

(3) Attach the connector per Chapter 20 of the Wiring Diagram Manual, with the wire length as shown in Fig. 701. Crimp the red (power) wire to connector pin 1, and crimp the green (ground) wire to pin 2.

D. Latch and release cable.

(1) Attach latch to box nearest the door latch actuator with the two screws and washers.

(2) Attach the release cable to the box and the latch with the remaining screw and washer.

35-21-21ASSEMBLY
Page 701
Sep 01/96

01.1

- E. Attach the 417T4250-1 or -3 clamps to actuator end of the box, and the 417T4250-2 or -4 clamp to opposite end of the box, with the screws and washers.

CAUTION: THE DOOR PANEL CAN BE SEEN FROM THE CABIN INTERIOR. BE CAREFUL NOT TO DAMAGE SURFACES THE PASSENGERS WILL SEE.

- F. Insert the hinge pin through the spring and into the hinge half and door the panel. Attach the door panel to the box with its screws and washers. Adjust the door panel per Fig. 701 and the location marks you made during disassembly. Remove the marks after the door panel is satisfactorily adjusted.

- G. Cover the heads of the screws with strips of protective tape approximately 1 inch long. Also, cover the gaps in the box, with tape length as necessary, with the tape on the inside of the box.

- H. Adjust actuator clearance (Fig. 701).

WARNING: THE OXYGEN GENERATOR IS A PYROTECHNIC HIGH-HEAT-PRODUCING UNIT WHICH CAN CAUSE SERIOUS BURNS. TO PREVENT INJURY TO PERSONNEL, BE SURE THAT A35001-8 SAFETY PIN WITH WARNING FLAG (PART OF A35001-10, RETRACTION EQUIPMENT) IS INSTALLED ON UNACTIVATED GENERATOR.

DO NOT ALLOW GREASE, OIL, FLAMMABLE SOLVENTS, DUST, LINT, FINE METAL FILINGS, OR OTHER COMBUSTIBLE MATERIALS TO CONTAMINATE PARTS THAT MAY BE EXPOSED TO OXYGEN. COMBUSTIBLE MATERIAL MAY IGNITE AND RESULT IN AN EXPLOSION WHEN EXPOSED TO OXYGEN.

- I. Put the generator in the clamps as shown in Fig. 705 and latch it in position. Put the clip into the latch (2 locations).

- J. Pack oxygen masks. (Fig. 702)

- (1) Unfold and flatten the bag. Lay the head strap on top of the bag and fold the bag in thirds, lengthwise.
- (2) Wrap the folded bag up the side of mask and down into the mask. Put the bag-tubing connection approximately centered in the bottom of the mask, with the remaining bag above the mask 1.0-2.0 inch.
- (3) Coil the tubing counterclockwise from the bottom of the mask. Put the coils of tubing on top of the bag.

35-21-21

ASSEMBLY

01.1

Page 702

Sep 01/96

- (4) Be sure to push the firmly down and against inside wall of mask.
- (5) Make sure the the ring is outside the mask assembly.
- (6) Make sure the release cable goes through the rings of the mask assembly.
- (7) Uncoil 16.0–20.0 inches of tubing. Do not fold the bag on top of the remaining tubing coiled in mask.
- (8) If missing, attach the streamer to one of the masks per Fig. 703. Crimp the sleeve with tool 51-C-887.

CAUTION: GENERATOR MANIFOLD MUST BE HELD DOWN WHEN THE TUBING IS INSTALLED ON THE OUTLETS.

- K. From inside the box, route the mask tubing or the flex hose out through the grommets as applicable. Install tubing or hose onto generator outlet(s). Attach the hose with its clamp.

CAUTION: WHEN YOU PUT THE RELEASE PIN INTO THE GENERATOR, DO NOT REMOVE THE A35001-8 SAFETY PIN WITH WARNING FLAG (PART OF A35001-10, RETRACTION EQUIPMENT).

CAUTION: REFER TO SB 767-35-0043, 767-35-0044 TO MAKE SURE THE RELEASE PIN IS IN THE RELEASE PIN HOLE, NOT IN THE SAFETY PIN HOLE (AD 2001-10-14).

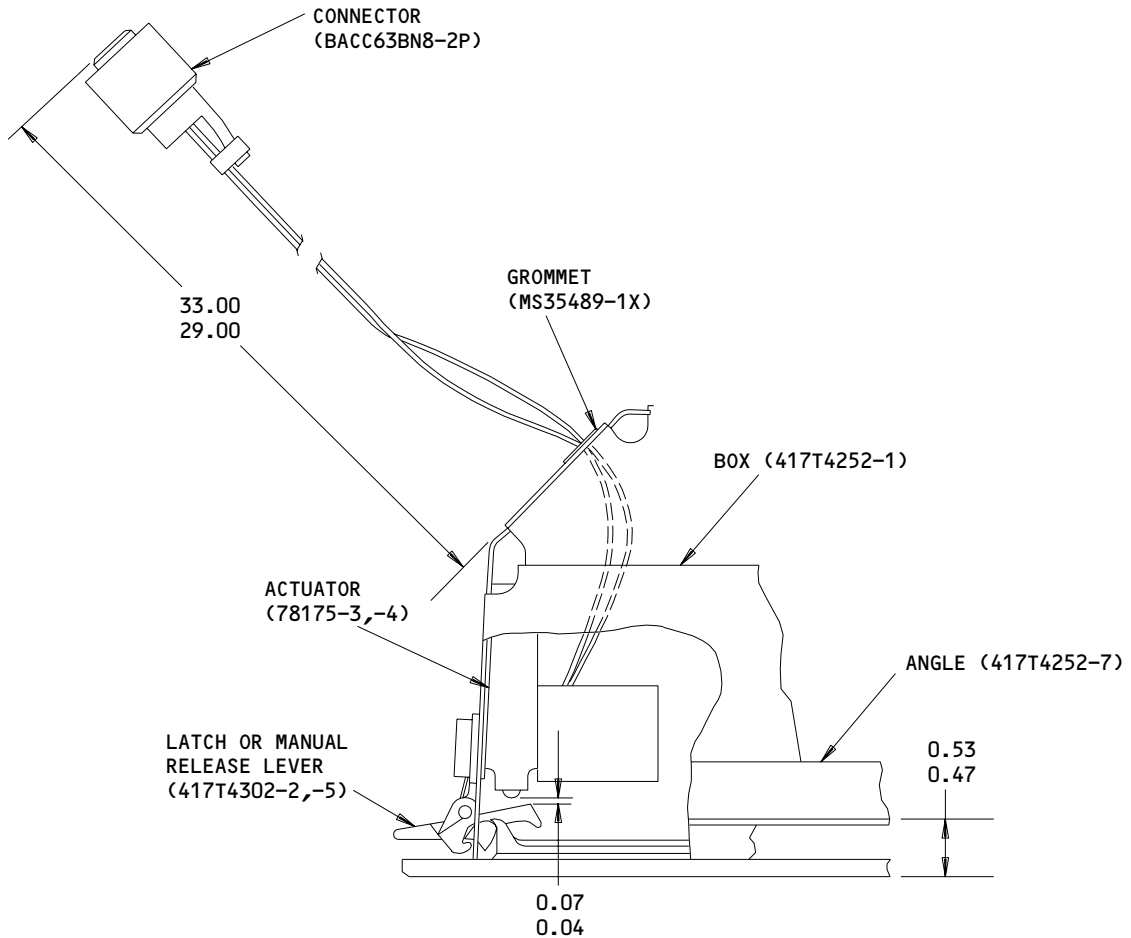
- L. Put the release pin through each ring, through the opening in module, and into the generator firing mechanism.
- M. Pull the loose hose length back through the grommets and coil it into the masks. The hose must not extend more than 0.25 inches beyond box edge (Fig. 704).
- N. Put the masks in the box on top of the release cable to prevent free movement. Coil the streamer and pack it in the box next to the masks (Fig. 705). Close and latch the door panel.

3. Storage

- A. Use standard industry practices and the instructions in 20-44-02 and 20-70-01.

35-21-21ASSEMBLY
Page 703
Nov 01/01

01.1



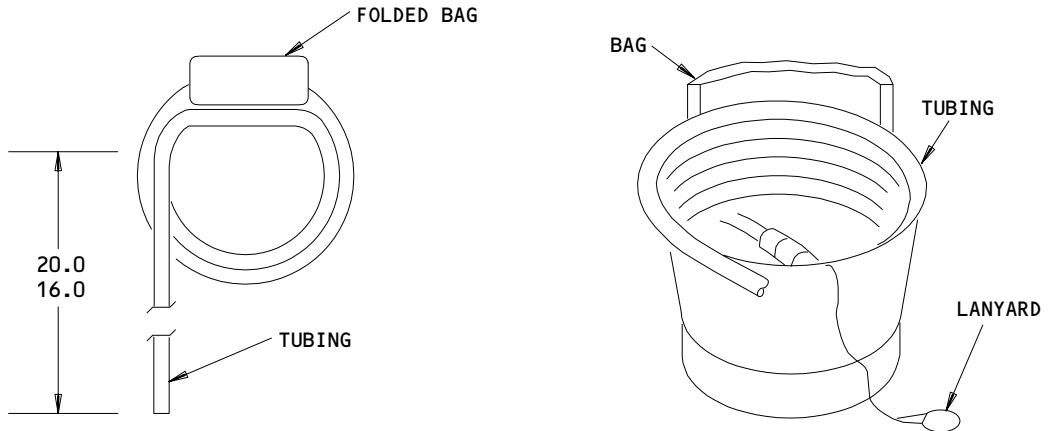
ALL DIMENSIONS ARE IN INCHES

Connector Attachment
 Figure 701

35-21-21

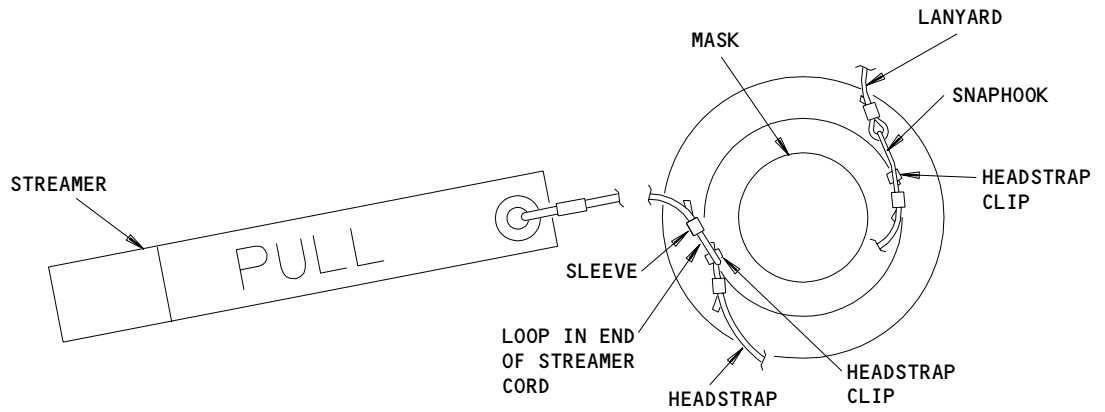
ASSEMBLY
 Page 704
 Sep 01/96

01.1



Streamer Attachment
Figure 702

F96005

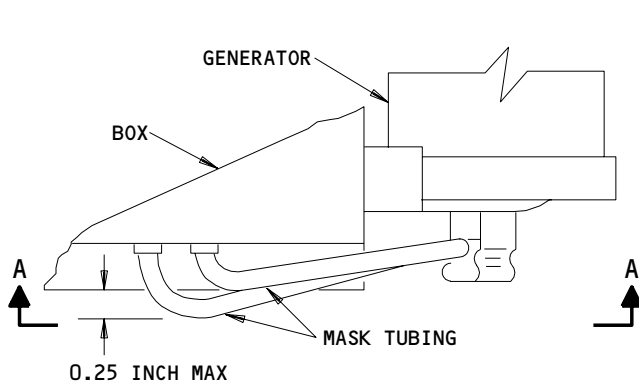


Streamer Attachment
Figure 703

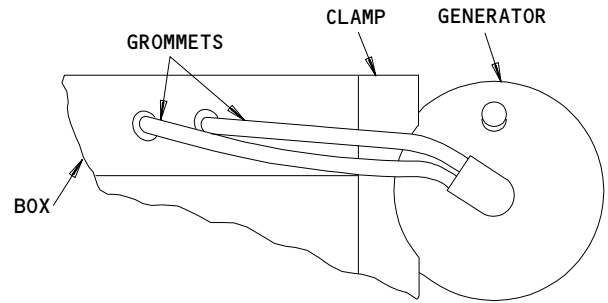
30446

35-21-21

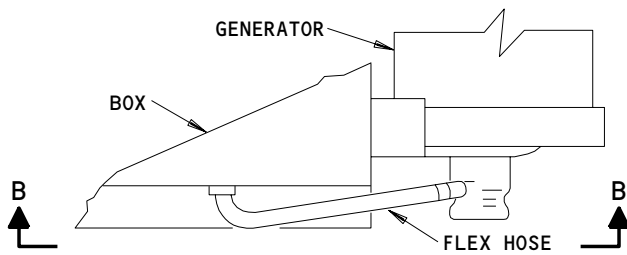
ASSEMBLY
Page 705
Sep 01/96



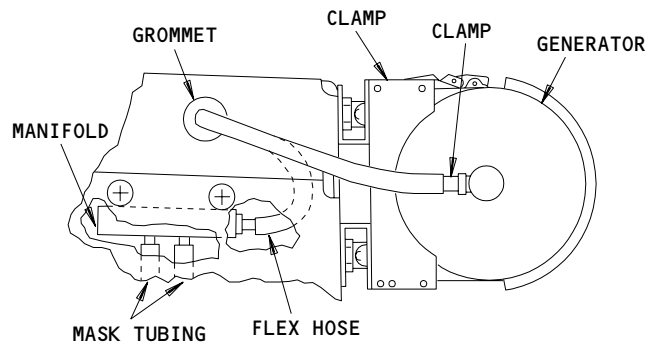
417T4202-6,-7,-9,-106,-107,-109,
 -206,-207,-209,-306,-307,
 -309,-406,-407,-409



A-A



417T4202-3,-8,-108,-203,-208,
 -403,-408,-413



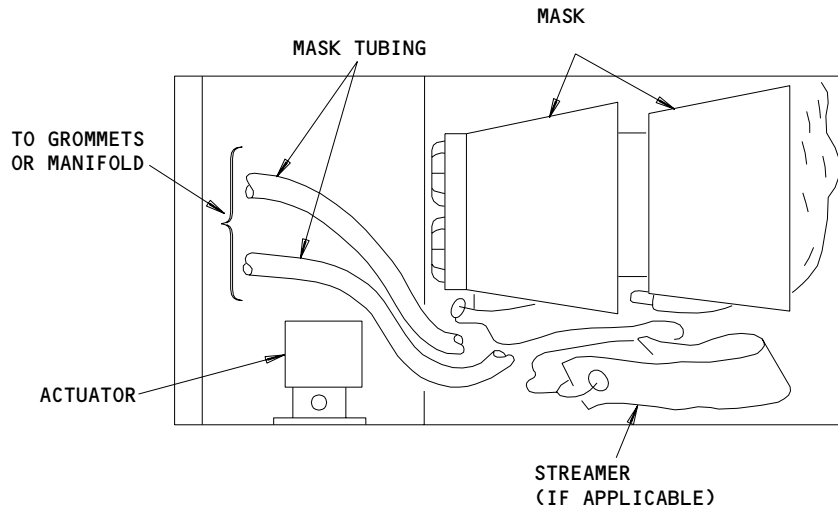
B-B

Generator Connection Details
 Figure 704

35-21-21

ASSEMBLY
 Page 706
 Sep 01/96

01.1



Oxygen Mask Packing Details
Figure 705

30447

35-21-21

ASSEMBLY
Page 707
Sep 01/96

01.1



SPECIAL TOOLS AND EQUIPMENT

NOTE: Equivalent substitutes can be used.

1. 51-C-887 -- Crimping tool (V76691)
2. A35001-10 -- Retraction Equipment - Firing Pin, Oxygen System (includes A35001-8 safety pin assy, and A35001-2 pliers assy)

35-21-21

SPECIAL TOOLS

01.1

Page 901

Sep 01/96



ILLUSTRATED PARTS LIST

1. This section lists and illustrates replaceable or repairable component parts. The Illustrated Parts Catalog contains a complete explanation of the Boeing part numbering system.

2. Indentures show parts relationships as follows:

Assembly

Detail Parts for Assembly

Subassembly

Attaching Parts for Subassembly

Detail Parts for Subassembly

Detail Installation Parts (Included only if installation parts may be returned to shop as part of assembly)

3. One use code letter (A, B, C, etc.) is assigned in the EFF CODE column for each variation of top assembly. All listed parts are used on all top assemblies except when limitations are shown by use code letter opposite individual part entries.

4. Letter suffixes (alpha-variants) are added to item numbers for optional parts, Service Bulletin modification parts, configuration differences (except left- and right-hand parts), product improvement parts, and parts added between two sequential item numbers. The alpha-variant is not shown on illustrations when appearance and location of all variants of the part is the same.

5. Service Bulletin modifications are shown by the notations PRE SB XXXX and POST SB XXXX.

A. When a new top assembly part number is assigned by Service Bulletin, the notations appear at the top assembly level only. The configuration differences at detail part level are then shown by use code letter.

B. When the top assembly part number is not changed by the Service Bulletin, the notations appear at the detail part level.

6. Parts Interchangeability

Optional
(OPT)

The parts are optional to and interchangeable with other parts having the same item number.

Supersedes, Superseded By
(SUPSDS, SUPSD BY)

The part supersedes and is not interchangeable with the original part.

Replaces, Replaced By
(REPLS, REPLD BY)

The part replaces and is interchangeable with, or is an alternate to, the original part.

35-21-21

ILLUSTRATED PARTS LIST

01

Page 1001

Jul 10/83

VENDORS

0NHT3 PRECISE PRODUCTS INC
348-B EVELYN STREET PO BOX 1249
PARAMUS, NEW JERSEY 07653-1249

00287 SPIROL INTL CORP
DANIELSON, CONNECTICUT 06239-0179

01556 EMHART FASTENING SYSTEMS GROUP HELI-COIL DIV
SHELTER ROCK LANE
DANBURY, CONNECTICUT 06810

02660 AMPHENOL CORP INDUSTRIAL TECHNOLOGY DIV
358 HALL AVENUE PO BOX 384
WALLINGFORD, CONNECTICUT 06492

06383 PANDUIT CORPORATION
17301 RIDGELAND AVENUE
TINLEY PARK, ILLINOIS 60477-3048

09790 EATON CORP VALVE AND ACTUATOR DIV
2338 ALASKA AVENUE
EL SEGUNDO, CALIFORNIA 90245-4896

11815 CHERRY AEROSPACE FASTENERS DIV OF TEXTRON
1224 EAST WARNER AVENUE PO BOX 2157
SANTA ANA, CALIFORNIA 92707-0157

13556 LABINAL COMPONENTS AND SYS CINCH MILITARY AEROSPACE DIV
8821 SCIENCE CENTER DRIVE
MINNEAPOLIS, MINNESOTA 55428-3619

15653 KAYNAR TECHNOLOGY KAYNAR DIV
800 SOUTH STATE COLLEGE BLVD PO BOX 3001
FULLERTON, CALIFORNIA 92634-3001

35-21-21

ILLUSTRATED PARTS LIST
01.1 Page 1002
Jul 01/98

VENDORS

16827 PURITAN-BENNETT AERO SYSTEMS
10800 PFLUMM ROAD
LENEXA, KANSAS 66215-2182

25281 OETEIKER INC
71-77 OKNER PARKWAY
LIVINGSTON, NEW JERSEY 07039

29372 FAIRCHILD IND INC AEROSP FSTNRS DIV SOUTH BAY OPNS/TRIDAIR
3000 WEST LOMITA BLVD
TORRANCE, CALIFORNIA 90505-5103

52828 REPUBLIC FASTENER MFG CORP
1300 RANCHO CONEJO BLVD
NEWBURY PARK, CALIFORNIA 91320-1405

53421 TYTON CORP
7930 FAULKNER ROAD PO BOX 23055
MILWAUKEE, WISCONSIN 53223-3496

59730 THOMAS AND BETTS CORP
1555 LYNNFIELD ROAD
MEMPHIS, TENNESSEE 38119

71087 BOOTS ACFT NUT DIV TOWNSEND CO SEE TEXTRON INC CHERRY
FASTENER TOWNSEND DIV V11815

72794 DZUS FASTENER COMPANY, INCORPORATED
425 UNION BOULEVARD
WEST ISLIP, NEW YORK 11795-3123

72962 ELASTIC STOP NUT A DIV OF HARTFORD INDUSTRIES INC
2330 VAUXHALL ROAD
UNION, NEW JERSEY 07083-5038

76385 MINOR RUBBER CO INC
49 ACKERMAN STREET
BLOOMFIELD, NEW JERSEY 07003-4201

35-21-21ILLUSTRATED PARTS LIST
01.1 Page 1003
Jul 01/98

VENDORS

80539 SPS TECHNOLOGIES INC AEROSPACE PRODUCTS DIV
2701 SOUTH HARBOR BOULEVARD PO BOX 1259
SANTA ANA, CALIFORNIA 92702-1259

82399 WATERBURY BUCKLE CO
952 SOUTH MAIN STREET
WATERBURY, CONNECTICUT 06706-3964

92215 FAIRCHILD IND INC FAIRCHILD AEROSPACE FASTENER DIV
3010 W LOMITA BLVD
TORRANCE, CALIFORNIA 90505-5102

35-21-21

ILLUSTRATED PARTS LIST
01.1 Page 1004
Jul 01/98


BOEING
 COMPONENT
 MAINTENANCE MANUAL

PART NUMBER	AIRLINE PART NO.	FIG.	ITEM	TTL REQ
AJ3-25		1	270A	4
		2	425	4
AN415-4		1	100	2
		2	120	2
AN960-10L		1	75	4
AN960-6		1	15	4
		1	210	2
		2	15	4
		2	335	2
AN960-8		1	230	3
		2	405	2
A87		1	142A	2
		2	215A	1
BACC10GH08		1	193	1
		2	310	1
BACC63BN8-2P		1	192	1
		2	305	1
BACN10JC06		1	20	2
		1	215	2
		2	20	2
		2	340	2
BACN10JC3		2	75	2
BACR15BA3AD		1	295	3
		1	315	2
		2	450	3
		2	470	2
BACR15BB3AD		1	300	2
		1	310	3
		1	325	15
		1	340	11
		2	455	2
		2	465	3
		2	480	15
		2	490	11
BACR15BB3AD2		1	95	4
		2	115	4
BACR15BB4AD		1	285	6
		2	440	6
BACS12FA08C6		2	350	3
BACS12FA3C13		2	60	2
BACS12FA3C6		2	65	4
BACS38K3		1	194B	1
		2	315A	1
BAC27TPPS6319		1	350	1
		2	500	1

35-21-21

 ILLUSTRATED PARTS LIST
 01.1 Page 1005
 Jul 01/98

PART NUMBER	AIRLINE PART NO.	FIG.	ITEM	TTL REQ
BRH10A06		1	20	2
		1	215	2
		2	20	2
		2	340	2
BRH10A3		2	75	2
		1	85C	4
CZ0781125		2	105B	4
		1	192	1
C0909A08-02PN		2	305	1
		1	20	2
H10-06BAC		1	20	2
		1	215	2
		2	20	2
		2	340	2
H10-3BAC		2	75	2
		1	133	1
MS20230GBP10		2	180	1
		1	133A	1
MS20230WBP10		2	185	1
		1	235	1
MS20253-2-775		2	355	1
		1	30	1
MS20253P2-550		2	30	1
		1	142	2
MS20659-102		2	215	1
		1	115	2
MS21207C4-4		2	135	2
		1	255	1
MS35489-1X		2	385	1
		1	260	2
MS35489-4X		2	390	1
		1	85B	4
MS35489-6X		2	105A	4
		1	131J	1
MS39086-26		1	132	1
		1	132B	2
		2	165	1
		2	170	1
		2	172	2
		2	400	2
MS51844-82		1	75B	4
		1	210B	2
MS51861-35		2	15A	4
		2	335A	2
		1	210B	2
		1	75B	4
NAS1149DN632J		1	210B	2
NAS1149DN632J		1	75B	4

35-21-21

 ILLUSTRATED PARTS LIST
 01.1 Page 1006
 Jul 01/98


BOEING
 COMPONENT
 MAINTENANCE MANUAL

PART NUMBER	AIRLINE PART NO.	FIG.	ITEM	TTL REQ
NAS1149DN832J		1	230B	3
		2	352	3
		2	405A	2
NAS1149D0332J		1	15B	4
		2	72	6
NAS1149FN632P		1	75A	4
		1	210A	2
NAS1149FN832P		1	230A	3
NAS1149F0332P		1	15A	4
NAS43DD3-24		2	70	2
NAS601-6		1	10	2
		1	200	2
NAS602-6		2	10	2
		2	325	2
		1	225	3
NAS603-13		2	350A	3
		2	60A	2
NAS603-6		1	70	4
		2	65A	4
NAS620-6		1	205	2
		2	330	2
NS202101-02		2	75	2
NS202101-62		2	20	2
		2	340	2
N03		1	275	4
		2	430	4
N0318		1	173A	2
		2	260	2
PLT4HTL		1	194B	1
		2	315A	1
RMLH9075-3W		2	75	2
RMLH9075-62W		1	20	2
		1	215	2
STBS38G3		2	20	2
		2	340	2
		1	194A	1
S417T401-22		2	315	1
		2	205	1
S417T401-25		1	140A	1
S417T402-3		1	195B	1
		2	320	1
S417T402-4		1	195D	1
		2	320A	1

35-21-21

 ILLUSTRATED PARTS LIST
 01.1 Page 1007
 Jul 01/98

PART NUMBER	AIRLINE PART NO.	FIG.	ITEM	TTL REQ
S418W001-109		1	145J	2
		2	235E	2
TY25M		1	194A	1
		2	315	1
TY525M		1	194C	1
		2	315B	1
T012R0		1	194B	1
		2	315A	1
T6S1032J		2	75	2
T6S632J		1	20	2
		1	215	2
		2	20	2
		2	340	2
VN303A02		2	75	2
VN303A62		1	20	2
		1	215	2
		2	20	2
		2	340	2
Z2318		1	260A	2
117003-12		1	140A	1
117003-22		2	205	1
30L20-2AA		1	90	2
		2	110	2
318		1	178B	2
		2	280B	2
417N3138-14		2	395	1
417N3138-15		2	410	1
417N3138-16		2	415	1
417T4202-103SP		1	1K	RF
		2	1C	RF
417T4202-106SP		1	1J	RF
		2	1D	RF
417T4202-109SP		1	1M	RF
		2	1E	RF
417T4202-206SP		1	1P	RF
		2	1F	RF
417T4202-209SP		1	1R	RF
		2	1A	RF
417T4202-403SP		1	1T	RF
		2	1H	RF
417T4202-406SP		1	1U	RF
		2	1J	RF
417T4202-416SP		1	1V	RF
		2	1K	RF
417T4202-426SP		1	1Z	RF

35-21-21

 ILLUSTRATED PARTS LIST
 01.1 Page 1008
 Jul 01/98


BOEING
 COMPONENT
 MAINTENANCE MANUAL

PART NUMBER	AIRLINE PART NO.	FIG.	ITEM	TTL REQ
417T4202-429SP		1	2	RF
417T4202-436SP		1	2A	RF
417T4202-6SP		1	1D	RF
417T4202-7SP		1	1E	RF
417T4202-8SP		1	1H	RF
		2	1B	RF
417T4202-9SP		1	1F	RF
417T4205-1		1	145	2
417T4205-106		1	177B	2
		2	275A	2
417T4205-11		2	245	2
417T4205-12		1	150	2
		2	240	2
417T4205-141		1	145D	2
		2	235B	2
417T4205-152		2	235C	2
417T4205-171		1	145F	2
417T4205-196		1	145G	2
		2	235D	2
417T4205-197		1	145H	2
417T4205-24		1	177	2
417T4205-26		1	178	2
		2	280	2
417T4205-32		1	182	4
		2	290	4
417T4205-34		1	170	2
		2	280C	2
417T4205-41		1	145A	2
		2	235	2
417T4205-47		1	177A	2
		2	275	2
417T4205-49		2	255	2

35-21-21

 ILLUSTRATED PARTS LIST
 01.1 Page 1009
 Jul 01/98

PART NUMBER	AIRLINE PART NO.	FIG.	ITEM	TTL REQ
417T4205-50		1	174	2
		1	174G	4
		2	250	2
		2	265	4
417T4205-52		2	235A	2
417T4205-6		1	180	2
417T4205-7		2	285	2
		1	175	4
417T4205-71		2	270	4
		1	145B	2
417T4205-8		1	190	2
417T4205-9		2	300	2
		1	185	2
417T4205-96		2	295	2
		1	173B	2
		1	178A	2
		2	260A	2
417T4250-1		2	280A	2
		2	90	1
417T4250-2		2	95	1
417T4250-3		1	60	1
417T4250-4		1	65	1
417T4250-6		1	105	2
417T4250-7		2	125	2
		1	80	2
417T4251-1SP		2	100	2
		1	5A	1
417T4251-11SP		2	5D	1
		1	5C	1
417T4251-12SP		2	5A	1
		2	5B	1
417T4252-1		1	265	1
417T4252-10		2	460	1
417T4252-13		2	475	1
417T4252-14		2	420	1

35-21-21

 ILLUSTRATED PARTS LIST
 01.1 Page 1010
 Jul 01/98


BOEING
 COMPONENT
 MAINTENANCE MANUAL

PART NUMBER	AIRLINE PART NO.	FIG.	ITEM	TTL REQ
417T4252-2		1	330	1
		2	485	1
417T4252-3		1	345	1
		2	495	1
417T4252-4		1	290	1
		2	445	1
417T4252-5		1	320	1
417T4252-6		1	305	1
417T4252-7		1	280	2
		2	435	2
417T4255-1		1	110	2
		2	130	2
417T4255-2		1	130G	2
		2	155	2
417T4255-3		1	125	2
		2	145	2
417T4255-4		1	120	2
		2	140	2
417T4256-1		1	220	1
		2	345	1
417T4256-3		1	220A	1
		2	345A	1
417T4257-1		1	25	1
		2	25	1
417T4257-2		1	40	1
		2	40	1
417T4257-3		1	45	1
		2	45	1
417T4262-1		1	141	1
		2	210	1
417T4262-2		1	144A	1
		2	230	1
417T4262-3		1	141A	1
		2	210A	1
417T4263-1		1	131	1
		2	160	1

35-21-21

ILLUSTRATED PARTS LIST

01.1

Page 1011

Jul 01/98

PART NUMBER	AIRLINE PART NO.	FIG.	ITEM	TTL REQ
417T4263-2		1	132A	1
		2	175	1
417T4263-6		1	131A	1
		2	160A	1
417T4263-7		1	134C	1
417T4263-7		2	195A	1
417T4263-8		1	132C	1
		2	175A	1
417T4263-9		1	134B	1
		2	192	1
417T4300-1		1	50	1
		2	50	1
417T4302-1		1	245	1
		2	365	1
417T4302-2		1	250	1
		2	380	1
417T4302-4		1	246	1
		2	375	1
417T4302-5		1	250A	1
		2	380A	1
417T4303-2		1	240	1
		2	360	1
417T4303-3		1	35A	1
		2	35	1
417T4305-1SP		1	55C	1
		2	55D	1
417T4305-11SP		1	55B	1
		2	55A	1
417T4305-12SP		2	55B	1
417T4307-1		1	143	1
		2	220	1
417T4307-2		1	143A	1
		2	220A	1
417T4308-1		1	144	1
		2	225	1
417T4317-1		2	80	1
417T4317-2		2	85	1
48-63N8-2P		1	192	1
		2	305	1
5-64X11-8MDP		1	85A	4
		2	105	4
6035-2BR0185		1	247	3
		2	370	3
6041-3BR0375		1	130	4
		2	150	4

35-21-21

 ILLUSTRATED PARTS LIST
 01.1 Page 1012
 Jul 01/98


BOEING
 COMPONENT
 MAINTENANCE MANUAL

PART NUMBER	AIRLINE PART NO.	FIG.	ITEM	TTL REQ
69-50420-2		1	134A	1
		2	195	1
69-50420-4		1	134	16
69-50420-4		2	190	16
70-505R		2	200	1
70-505RD		2	200A	1
78175-3		1	195B	1
		2	320	1
78175-4		1	195D	1
		2	320A	1
96-02		2	75	2
96-62		1	20	2
		1	215	2
		2	20	2
		2	340	2

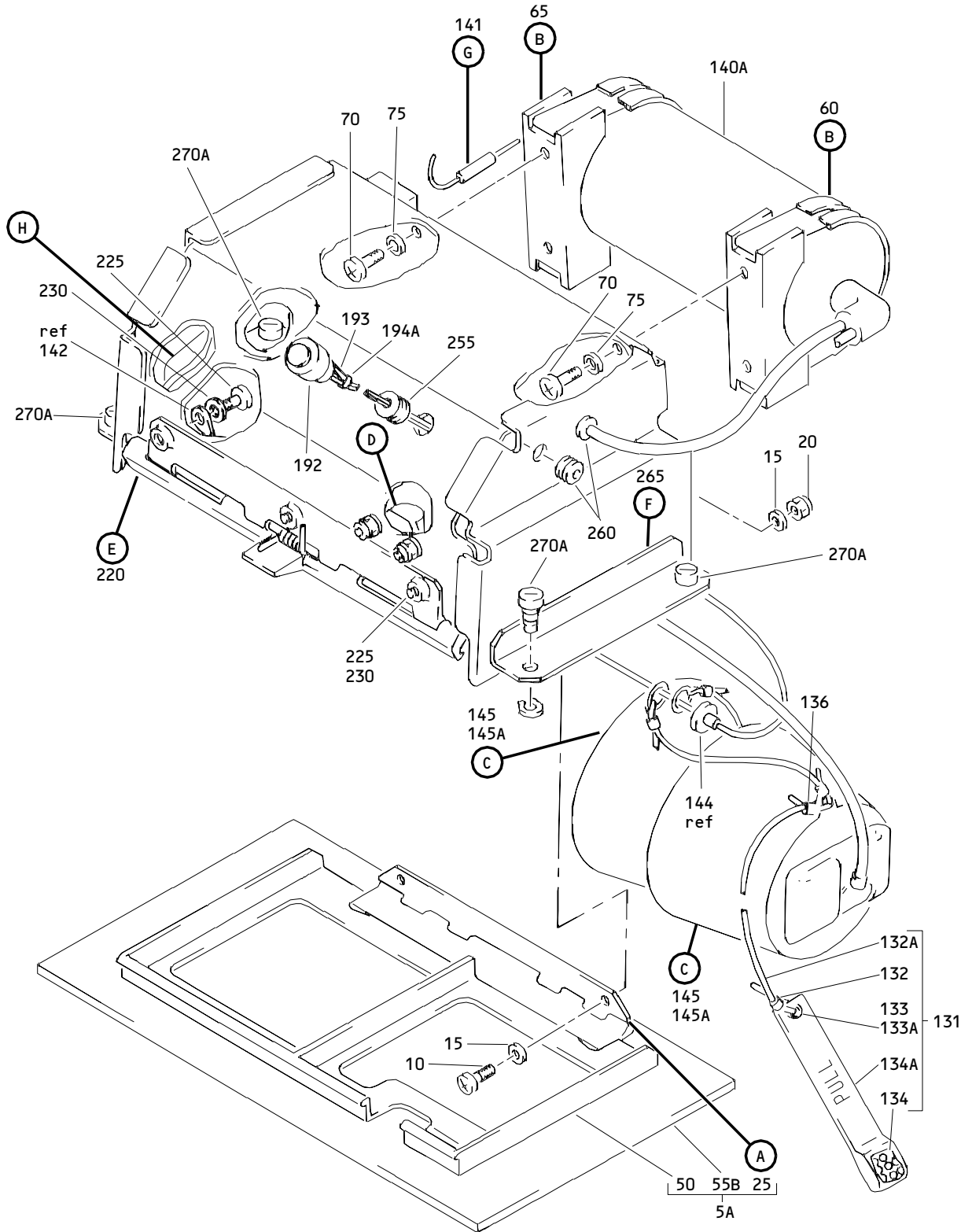
35-21-21

ILLUSTRATED PARTS LIST

01.1

Page 1013

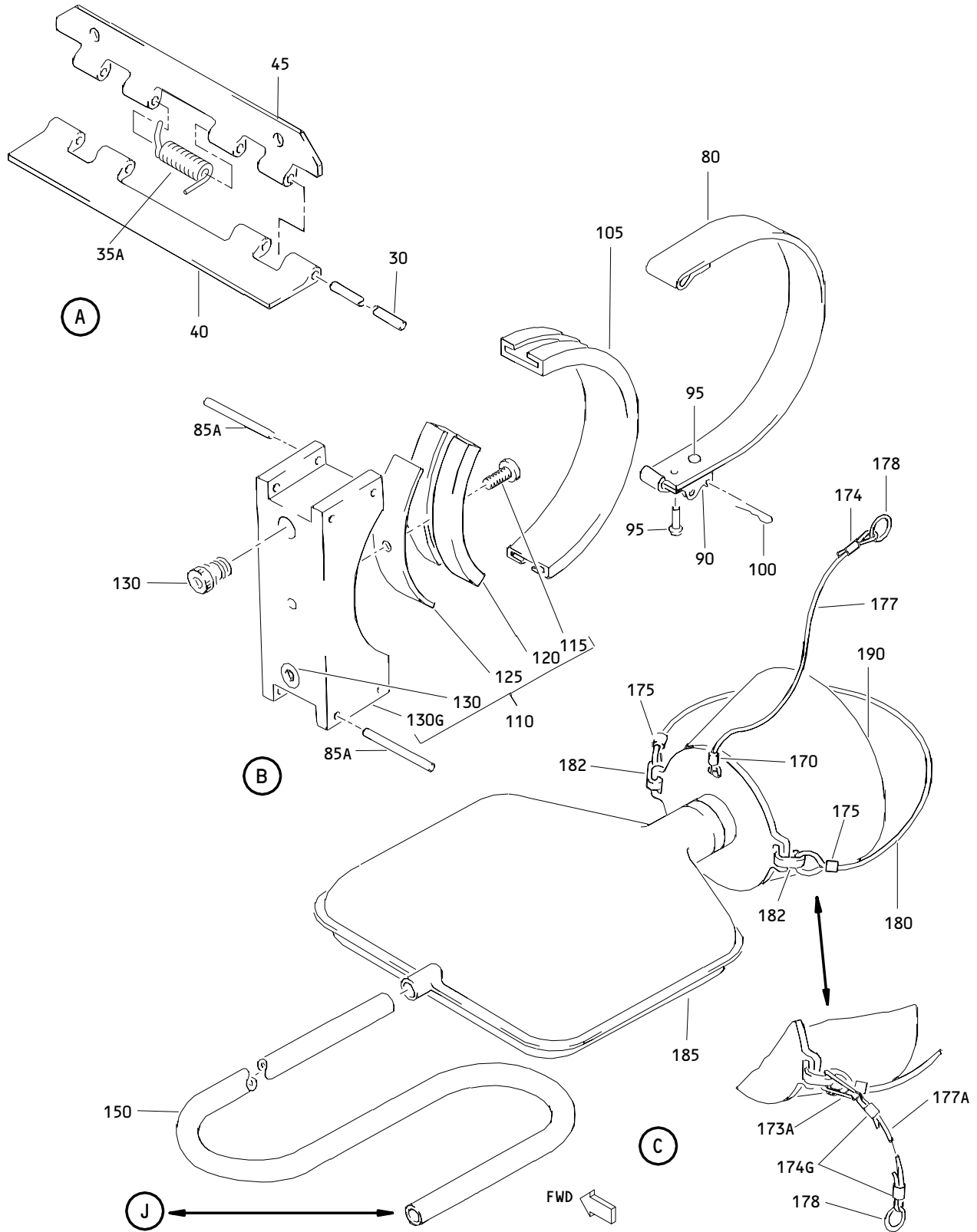
Jul 01/98



Lavatory and Flight Attendant Oxygen Module Assembly
 Figure 1 (Sheet 1)

35-21-21

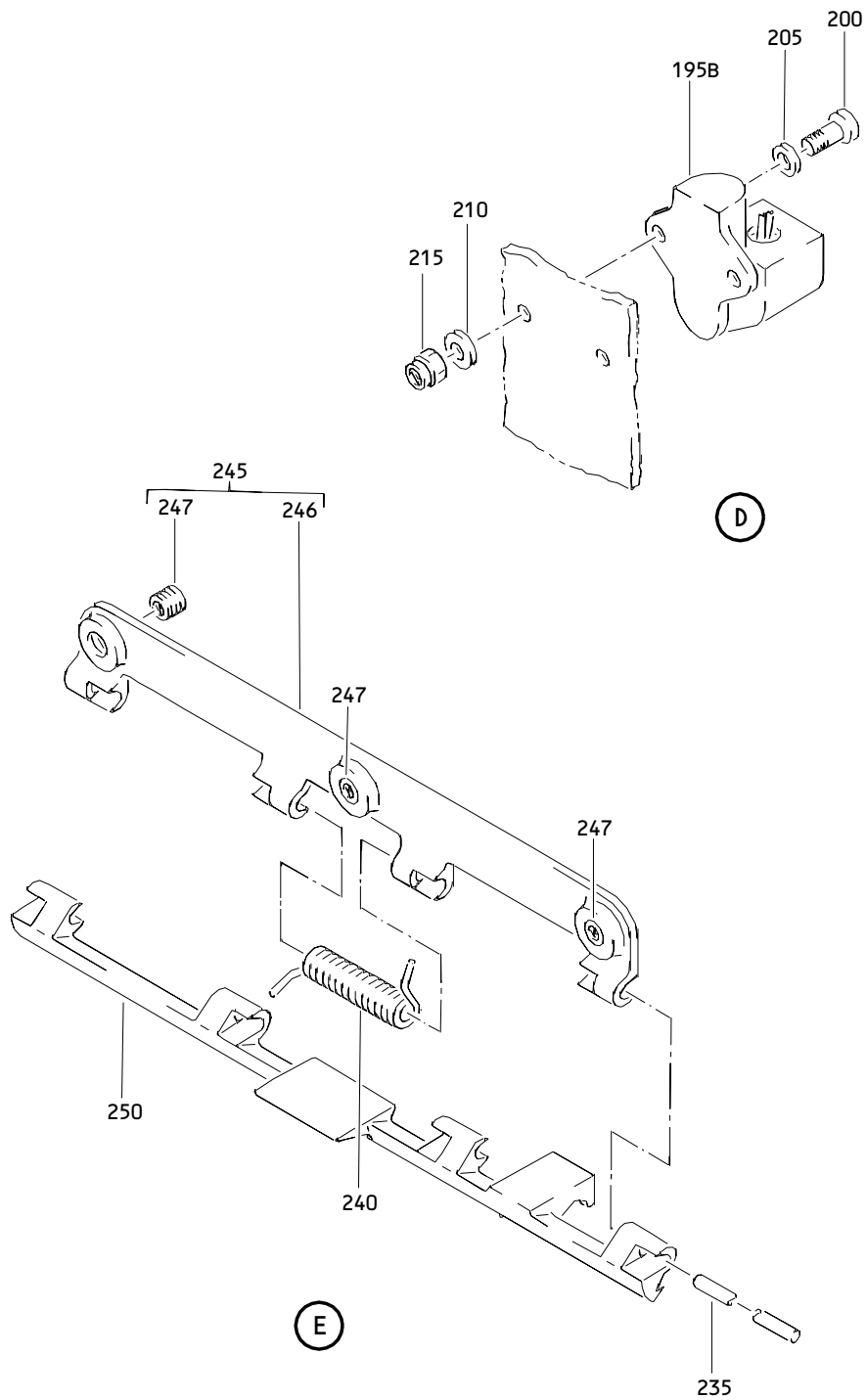
ILLUSTRATED PARTS LIST
 01.1 Page 1015
 Jul 01/98



Lavatory and Flight Attendant Oxygen Module Assembly
 Figure 1 (Sheet 2)

35-21-21

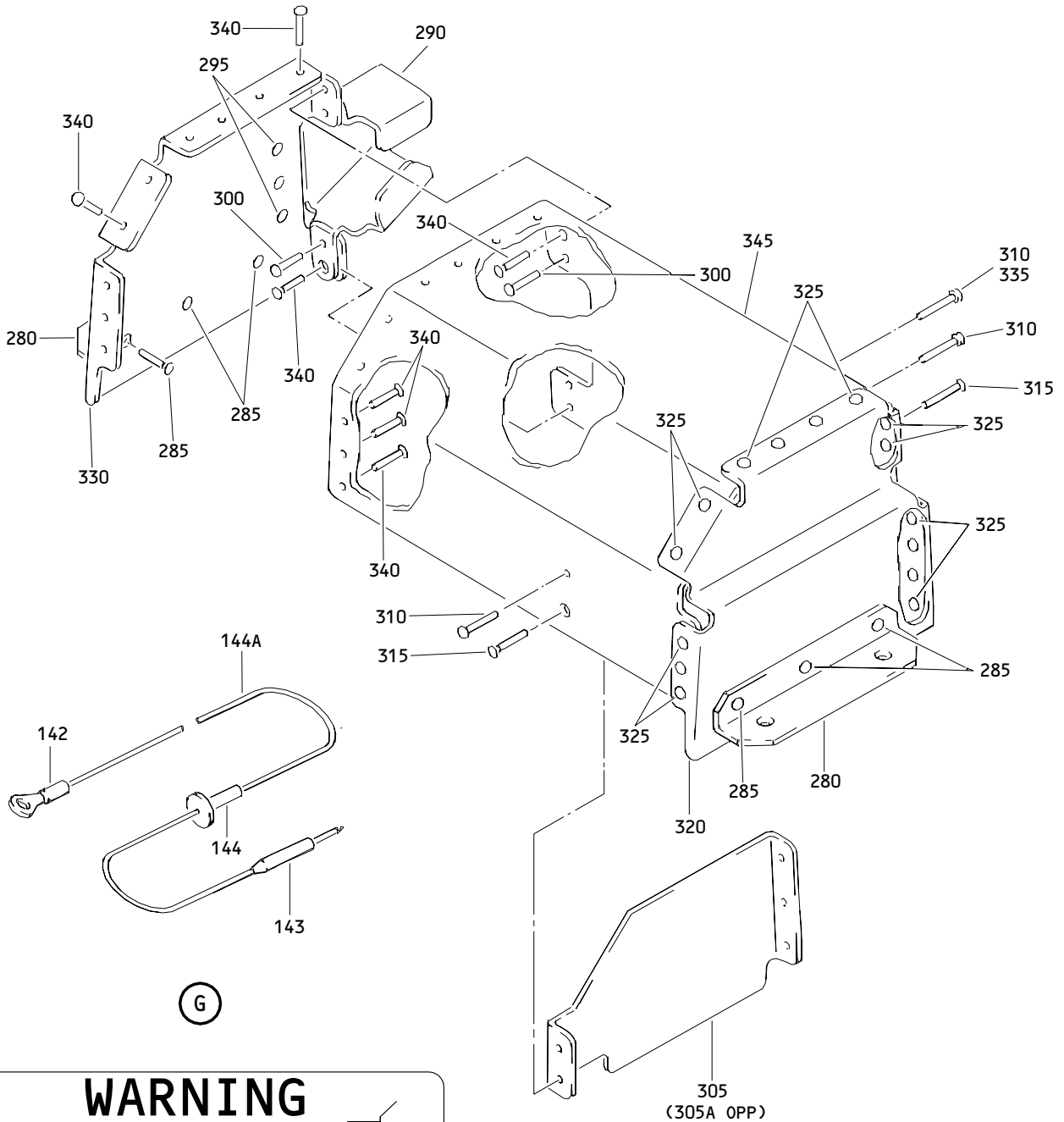
ILLUSTRATED PARTS LIST
 01.1 Page 1016
 Jul 01/98



Lavatory and Flight Attendant Oxygen Module Assembly
 Figure 1 (Sheet 3)

35-21-21

ILLUSTRATED PARTS LIST
 01.1 Page 1017
 Jul 01/98



(G)

(F)

WARNING

ROUTE RELEASE CABLE THROUGH BRACKET CENTER AS SHOWN. OTHER ROUTING PREVENTS FLOW OF OXYGEN. (SEE MM 35-21)

(H)

Lavatory and Flight Attendant Oxygen Module Assembly
 Figure 1 (Sheet 4)

35-21-21

ILLUSTRATED PARTS LIST
 01.1 Page 1018
 Jul 01/98


BOEING
 COMPONENT
 MAINTENANCE MANUAL

FIG. & ITEM	PART NO.	AIRLINE PART NUMBER	NOMENCLATURE 1234567	EFF CODE	QTY PER ASSY
01-					
-1	417T4202-1		DELETED		
-1A	417T4202-4		DELETED		
-1B	417T4202-4SP		DELETED		
-1C	417T4202-5SP		DELETED		
-1D	417T4202-6SP		MODULE ASSY-OXY, LAV AND FLIGHT ATTENDANT	B	RF
-1E	417T4202-7SP		MODULE ASSY-OXY, LAV AND FLIGHT ATTENDANT	A	RF
-1F	417T4202-9SP		MODULE ASSY-OXY, LAV AND FLIGHT ATTENDANT	C	RF
-1G	417T4202-3SP		MODULE ASSY-OXY, LAV AND FLIGHT ATTENDANT	D	RF
-1H	417T4202-8SP		MODULE ASSY-OXY, LAV AND FLIGHT ATTENDANT (FOR DETAILS SEE FIG. 2)	E	RF
-1J	417T4202-106SP		MODULE ASSY-OXY, LAV AND FLIGHT ATTENDANT (FOR DETAILS SEE FIG. 2)	F	RF
-1K	417T4202-103SP		MODULE ASSY-OXY, LAV AND FLIGHT ATTENDANT (FOR DETAILS SEE FIG. 2)	G	RF
-1L	417T4202-108SP		MODULE ASSY-OXY, LAV AND FLIGHT ATTENDANT (FOR DETAILS SEE FIG. 2)	H	RF
-1M	417T4202-109SP		MODULE ASSY-OXY, LAV AND FLIGHT ATTENDANT (FOR DETAILS SEE FIG. 2)	J	RF
-1N	417T4202-203SP		MODULE ASSY-OXY, LAV AND FLIGHT ATTENDANT (FOR DETAILS SEE FIG. 2)	K	RF
-1P	417T4202-206SP		MODULE ASSY-OXY, LAV AND FLIGHT ATTENDANT (FOR DETAILS SEE FIG. 2)	L	RF
-1Q	417T4202-208SP		MODULE ASSY-OXY, LAV AND FLIGHT ATTENDANT (FOR DETAILS SEE FIG. 2)	M	RF
-1R	417T4202-209SP		MODULE ASSY-OXY, LAV AND FLIGHT ATTENDANT (FOR DETAILS SEE FIG. 2)	N	RF
-1S	417T4202-408SP		DELETED		
-1T	417T4202-403SP		MODULE ASSY-OXY, LAV AND FLIGHT ATTENDANT (FOR DETAILS SEE FIG. 2)	Q	RF
-1U	417T4202-406SP		MODULE ASSY-OXY, LAV AND FLIGHT ATTENDANT	R	RF
-1V	417T4202-416SP		MODULE ASSY-OXY, LAV AND FLIGHT ATTENDANT	S	RF

35-21-21

ILLUSTRATED PARTS LIST

01.1

Page 1019

Jul 01/98

FIG. & ITEM	PART NO.	AIRLINE PART NUMBER	NOMENCLATURE 1234567	EFF CODE	QTY PER ASSY
01- -1W	417T4202-413SP		MODULE ASSY-OXY, LAV AND FLIGHT ATTENDANT (FOR DETAILS SEE FIG. 2)	T	RF
-1X	417T4202-419SP		MODULE ASSY-OXY, LAV AND FLIGHT ATTENDANT	U	RF
R -1Y	417T4202-423SP		MODULE ASSY-OXY, LAV AND FLIGHT ATTENDANT (FOR DETAILS SEE FIG. 2)	X	RF
R -1Z	417T4202-426SP		MODULE ASSY-OXY, LAV AND FLIGHT ATTENDANT	P	RF
R -2	417T4202-429SP		MODULE ASSY-OXY, LAV AND FLIGHT ATTENDANT	Y	RF
R -2A	417T4202-436SP		MODULE ASSY-OXY, LAV AND FLIGHT ATTENDANT	Z	RF
5	417T4251-1		DELETED		
5A	417T4251-1SP		.PANEL ASSY-DOOR	A-C, L , N	1
-5B	417T4251-2SP		DELETED		
-5C	417T4251-11SP		.PANEL ASSY-DOOR	F, J, P , R, S, U, Y, Z	1
-5D	417T4251-12SP		DELETED		
-5E	417T4251-32SP		DELETED		
10	NAS601-6		ATTACHING PARTS .SCREW	A-C, F , J, L, N, P, R , S, U, Y, Z	2
15	AN960-6		.WASHER	A-C, F , J, L, N	4
-15A	NAS1149F0332P		.WASHER	P, R, S , U	4
R -15B	NAS1149D0332J		.WASHER	Y, Z	4

35-21-21

ILLUSTRATED PARTS LIST

01.1

Page 1020

Jul 01/98


BOEING
 COMPONENT
 MAINTENANCE MANUAL

FIG. & ITEM	PART NO.	AIRLINE PART NUMBER	NOMENCLATURE 1234567	EFF CODE	QTY PER ASSY
01-20	H10-06BAC		.NUT- (V15653) (SPEC BACN10JC06) (OPT RMLH9075-62W (V72962)) (OPT T6S632J (V11815)) (OPT VN303A62 (V92215)) (OPT 96-62 (V80539)) (OPT BRH10A06 (OPT BRH10A06 (V52828)) -----*-----	A-C,F ,J,L, N,P,R ,S,U, Y,Z	2
25	417T4257-1		..HINGE ASSY	A-C,F ,J,L, N,P,R ,S,U, Y,Z	1
25A 30	417T4257-4 MS20253P2-550		DELETED ...PIN-HINGE	A-C,F ,J,L, N,P,R ,S,U, Y,Z	1
35 35A	417T4303-1 417T4303-3		DELETED ...SPRING	A-C,F ,J,L, N,P,R ,S,U, Y,Z	1

35-21-21

ILLUSTRATED PARTS LIST

01.1

Page 1021

Jul 01/98

FIG. & ITEM	PART NO.	AIRLINE PART NUMBER	NOMENCLATURE 1234567	EFF CODE	QTY PER ASSY
01-40	417T4257-2		...HINGE HALF	A-C,F ,J,L, N,P,R ,S,U, Y,Z	1
45	417T4257-3		...HINGE HALF	A-C,F ,J,L, N,P,R ,S,U, Y,Z	1
50	417T4300-1		..STRIKE	A-C,F ,J,L, N,P,R ,S,U, Y,Z	1
55	417T4305-1		DELETED		
-55A	417T4305-2		DELETED		
55B	417T4305-11SP		..PANEL	F,J,P ,R,S, U,Y,Z	1
-55C	417T4305-1SP		..PANEL	A-C,L ,N	1
-55D	417T4305-2SP		DELETED		
-55E	417T4305-12SP		DELETED		
-55F	417T4305-32SP		DELETED		
56	BACS12FA3C13		DELETED		
56J	NAS43DD3-24		DELETED		
57	BACS12FA3C6		DELETED		
58	417T4317-1		DELETED		
59	417T4317-2		DELETED		

35-21-21

 ILLUSTRATED PARTS LIST
 01.1 Page 1022
 Jul 01/98

BOEING
 COMPONENT
 MAINTENANCE MANUAL

FIG. & ITEM	PART NO.	AIRLINE PART NUMBER	NOMENCLATURE 1234567	EFF CODE	QTY PER ASSY
01-60	417T4250-3		.CLAMP ASSY	A-C,F ,J,L, N,P,R ,S,U, Y,Z	1
-60A 65	417T4250-1 417T4250-4		DELETED .CLAMP ASSY	A-C,F ,J,L, N,P,R ,S,U, Y,Z	1
-65A 70	417T4250-2 NAS603-6		DELETED ATTACHING PARTS .SCREW	A-C,F ,J,L, N,P,R ,S,U, Y,Z	4
75	AN960-10L		.WASHER	A-C,F ,J,L, N	4
-75A	NAS1149FN632P		.WASHER	P,R,S ,U	4
R -75B	NAS1149DN632J		.WASHER	Y,Z	4
80	417T4250-7		-----*----- ..STRAP	A-C,F ,J,L, N,P,R ,S,U, Y,Z	1

35-21-21

ILLUSTRATED PARTS LIST
 01.1 Page 1023
 Jul 01/98

FIG. & ITEM	PART NO.	AIRLINE PART NUMBER	NOMENCLATURE 1234567	EFF CODE	QTY PER ASSY
01-					
85	MS20253P2-105		ATTACHING PARTS DELETED		
85A	5-64X11-8MDP		..PIN- (V00287) (OPT ITEM 85B, 85C)	A-C,F ,J,L, N,P,R ,S,U, Y,Z	2
			-----*		
-85B	MS39086-26		..PIN-SPR (OPT ITEM 85A, 85C)	A-C,F ,J,L, N,P,R ,S,U, Y,Z	2
-85C	CZ0781125		..PIN-SPR (VONHT3) (OPT ITEM 85A, 85B)	A-C,F ,J,L, N,P,R ,S,U, Y,Z	2
90	30L20-2AA		..LATCH- (V29372)	A-C,F ,J,L, N,P,R ,S,U, Y,Z	1
95	BACR15BB3AD2		ATTACHING PARTS ..RIVET	A-C,F ,J,L, N,P,R ,S,U, Y,Z	2
			-----*		

35-21-21

ILLUSTRATED PARTS LIST

01.1

Page 1024

Jul 01/98


BOEING
 COMPONENT
 MAINTENANCE MANUAL

FIG. & ITEM	PART NO.	AIRLINE PART NUMBER	NOMENCLATURE 1234567	EFF CODE	QTY PER ASSY
01-100	AN415-4		..PIN-LOCK	A-C,F ,J,L, N,P,R ,S,U, Y,Z	1
-100A 105	23 417T4250-6		DELETED ..COVER-STRAP	A-C,F ,J,L, N,P,R ,S,U, Y,Z	1
110	417T4255-1		..BLOCK ASSY	A-C,F ,J,L, N,P,R ,S,U, Y,Z	1
115	MS21207C4-4		...SCREW	A-C,F ,J,L, N,P,R ,S,U, Y,Z	1
120	417T4255-4		...COVER-STRAP	A-C,F ,J,L, N,P,R ,S,U, Y,Z	1
125	417T4255-3		...STRAP	A-C,F ,J,L, N,P,R ,S,U, Y,Z	1

35-21-21

ILLUSTRATED PARTS LIST

01.1

Page 1025

Jul 01/98

FIG. & ITEM	PART NO.	AIRLINE PART NUMBER	NOMENCLATURE 1234567	EFF CODE	QTY PER ASSY
01-130	6041-3BR0375		...INSERT- (V01556)	A-C,F ,J,L, N,P,R ,S,U, Y,Z	2
130G	417T4255-2		...BLOCK	A-C,F ,J,L, N,P,R ,S,U, Y,Z	1
131	417T4263-1		.STREAMER ASSY	A-C,F ,J,L, N,P,R ,S,U Y,Z	1
R -131A	417T4263-6		.STREAMER ASSY ATTACHING PARTS	Y,Z	1
131J	MS51844-82		.SLEEVE	A-C,F ,J,L, N,P,R ,S,U, Y,Z	1
132	MS51844-82		-----*----- ..SLEEVE	A-C,F ,J,L, N,P,R ,S,U	1
132A	417T4263-2		..CORD	A-C,F ,J,L, N,P,R ,S,U	1
R 132B	MS51844-82		..SLEEVE	Y,Z	2
R 132C	417T4263-8		..CORD	Y,Z	1
133	MS20230GBP10		..GROMMET	A-C,F ,J,L, N,P,R ,S,U, Y,Z	1
133A	MS20230WBP10		..WASHER	A-C,F ,J,L, N,P,R ,S,U, Y,Z	1

35-21-21

 ILLUSTRATED PARTS LIST
 01.1 Page 1026
 Jul 01/98


BOEING
 COMPONENT
 MAINTENANCE MANUAL

FIG. & ITEM	PART NO.	AIRLINE PART NUMBER	NOMENCLATURE 1234567	EFF CODE	QTY PER ASSY
01- 134	69-50420-4		..WEIGHT-SHOT	A-C,F ,J,L, N,P,R ,S,U	16
134A	69-50420-2		..STREAMER	A-C,F ,J,L, N,P,R ,S,U	1
R 134B	417T4263-9		..WEIGHT-CURTAIN	Y,Z	1
R 134C	417T4263-7		..STREAMER	Y,Z	1
135	417T4255-2		DELETED		
139	837150		DELETED		
139A	7-0-505R		DELETED		
140	117003-02		DELETED		
140A	117003-12		.GENERATOR-2 PERSON (V16827) (SPEC S417T401-25)	A-C,F ,J,L, N,P,R ,S,U, Y,Z	1
-140B	S417T401-22		DELETED		
-140C	117003-22		DELETED		
141	417T4262-1		.CABLE ASSY-RELEASE (LIMITED)	A-C,F	1
-141A	417T4262-3		.CABLE ASSY-RELEASE (LIMITED)	A-C,F ,J	1
-141B	417T4262-1		.CABLE ASSY-RELEASE	L,N	1
-141C	417T4262-3		.CABLE ASSY-RELEASE	P,R,S ,U,Y, Z	1
142	MS20659-102		..TERMINAL- (OPT ITEM 142A)	A-C,F ,J,L, N,P,R ,S,U, Y,Z	1
-142A	A87		..TERMINAL-CABLE (V59730) (OPT ITEM 142)	A-C,F ,J,L, N,P,R ,S,U, Y,Z	1

35-21-21

ILLUSTRATED PARTS LIST

01.1

Page 1027

Jul 01/98

FIG. & ITEM	PART NO.	AIRLINE PART NUMBER	NOMENCLATURE 1234567	EFF CODE	QTY PER ASSY
01-143	417T4307-1		..PIN- (USED ON ITEMS 141, 141B)	A-C,F ,L,N	1
-143A	417T4307-2		..PIN- (USED ON ITEMS 141A 141C)	A-C,F ,J,P, R,S,U ,Y,Z	1
144	417T4308-1		..STOP-LANYARD	A-C,F ,J,L, N,P,R ,S,U, Y,Z	1
144A	417T4262-2		..ROPE-WIRE	A-C,F ,J,L, N,P,R ,S,U, Y,Z	1
145	417T4205-1		.MASK ASSY-PASS.	A	2
145A	417T4205-41		.MASK ASSY-PASS.	B	2
-145B	417T4205-71		.MASK ASSY-PASS.	C	2
-145C	417T4205-52		DELETED		
-145D	417T4205-141		.MASK ASSY-PASS.	F,L,R	2
-145E	417T4205-152		DELETED		
-145F	417T4205-171		.MASK ASSY-PASS.	J,N	2
-145G	417T4205-196		.MASK ASSY-PASS.	P,S	2
R-145H	417T4205-197		.MASK ASSY-PASS.	U	2
R-145J	S418W001-109		.MASK ASSY-OXY	Y	2
R-145K	S418W001-110		.MASK ASSY-OXY	Z	2
150	417T4205-12		..TUBING	A-C,F ,J,L, N,P,R ,S,U	1
155	417T4205-11		DELETED		

35-21-21

 ILLUSTRATED PARTS LIST
 01.1 Page 1028
 Jul 01/98


BOEING
 COMPONENT
 MAINTENANCE MANUAL

FIG. & ITEM	PART NO.	AIRLINE PART NUMBER	NOMENCLATURE 1234567	EFF CODE	QTY PER ASSY
01-					
160	417T4205-50		DELETED		
165	417T4205-49		DELETED		
170	417T4205-34		..EYELET-LANYARD	A,P,S ,U	1
173	318		DELETED		
173A	N0318		..SNAPHOOK- (V82399) (OPT ITEM 173B)	B,C,F ,J,L, N,P,R ,S	1
-173B	417T4205-96		..RING- (OPT ITEM 173A)	B,C,F ,J,L, N,P,R ,S	1
174	417T4205-50		..CLAMP-LANYARD	A,P,S ,U	1
174G	417T4205-50		..CLAMP-LANYARD	B,C,F ,J,L, N,R	2
175	417T4205-7		..CLAMP-HEAD STRAP	A-C,F ,J,L, N,P,R ,S,U	2
176	417T4205-7		DELETED		
177	417T4205-24		..LANYARD	A	1
177A	417T4205-47		..LANYARD	B,C,F ,J,L, N,R	1
-177B	417T4205-106		..LANYARD	P,S,U	1
178	417T4205-26		..RING	A-C	1
-178A	417T4205-96		..RING- (OPT ITEM 178B)	F,J,L ,N,R	1
-178B	318		..SNAPHOOK- (OPT ITEM 178A)	F,J,L ,N,R	1
-178C	417T4205-96		..RING	P,S,U	1

35-21-21

ILLUSTRATED PARTS LIST

01.1

Page 1029

Jul 01/98

FIG. & ITEM	PART NO.	AIRLINE PART NUMBER	NOMENCLATURE 1234567	EFF CODE	QTY PER ASSY
01-179	417T4205-26		DELETED		
180	417T4205-6		..STRAP-HEAD	A-C,F ,J,L, N,P,R ,S,U	1
182	417T4205-32		..CLIP-HEAD STRAP	A-C,F ,J,L, N,P,R ,S,U	2
185	417T4205-9		..BAG	A-C,F ,J,L, N,P,R ,S,U	1
190	417T4205-8		..MASK	A-C,F ,J,L, N,P,R ,S,U	1
192	C0909A08-02PN		.CONNECTOR- (V13556) (SPEC BACC63BN8-2P) (OPT 48-63N8-2P (V02660))	A-C,F ,J,L, N,P,R ,S,U, Y,Z	1
193	BACC10GH08		.CLAMP	A-C,F ,J,L, N,P,R ,S,U, Y,Z	1

35-21-21

ILLUSTRATED PARTS LIST

01.1 Page 1030

Jul 01/98


BOEING
 COMPONENT
 MAINTENANCE MANUAL

FIG. & ITEM	PART NO.	AIRLINE PART NUMBER	NOMENCLATURE 1234567	EFF CODE	QTY PER ASSY
01- 194 194A	TY25M TY25M		DELETED .STRAP- (V59730) (SPEC STBS38G3) (OPT ITEMS 194B, 194C)	A-C,F ,J,L, N	1
-194B	PLT4HTL		.STRAP- (V06383) (SPEC BACS38K3) (OPT T012R0 (V53421)) (OPT ITEMS 194A, 194C)	A-C,F ,J,L, N	1
-194C	TY525M		.CLAMP- (V06383) (OPT ITEMS 194A, 194B)	A-C,F ,J,L, N	1
-194D	TY25M		.STRAP- (V59730) (SPEC STBS38G3)	R	1
-194E	PLT4HTL		.STRAP- (V06383) (SPEC BACS38K3) (OPT T012R0 (V53421))	P,S,U ,Y,Z	1
195 195A 195B	78175-2 78175-21 78175-3		DELETED DELETED .ACTUATOR-DOOR LATCH (V09790) (SPEC S417T402-3) (OPT ITEM 195D)	A-C,F ,J,L, N	1
195C -195D	S417T402-4 78175-4		DELETED .ACTUATOR-DOOR LATCH (V09790) (SPEC S417T402-4) (OPT ITEM 195B)	A-C,F ,J,L, N	1
-195E	78175-3		.ACTUATOR-DOOR LATCH (V09790) (SPEC S417T402-3)	R	1
-195F	78175-4		.ACTUATOR-DOOR LATCH (V09790) (SPEC S417T402-4)	P,S,U ,Y,Z	1
200	NAS601-6		ATTACHING PARTS .SCREW	A-C,F ,J,L, N,P,R ,S,U, Y,Z	2

35-21-21

ILLUSTRATED PARTS LIST

01.1

Page 1031

Jul 01/98

FIG. & ITEM	PART NO.	AIRLINE PART NUMBER	NOMENCLATURE 1234567	EFF CODE	QTY PER ASSY
01-205	NAS620-6		.WASHER	A-C,F ,J,L, N,P,R ,S,U, Y,Z	2
210	AN960-6		.WASHER	A-C,F ,J,L, N	2
-210A	NAS1149FN632P		.WASHER	P,R,S ,U	2
R -210B	NAS1149DN632J		.WASHER	Y,Z	2
215	H10-06BAC		.NUT- (V15653) (SPEC BACN10JC06) (OPT RMLH9075-62W (V72962)) (OPT T6S632J (V11815)) (OPT VN303A62 (V92215)) (OPT 96-62 (V80539)) (OPT BRH10A06 (OPT BRH10A06 (V52828)) -----*-----	A-C,F ,J,L, N,P,R ,S,U, Y,Z	2
220	417T4256-1		.LATCH ASSY-DOOR	A-C,F ,J,L, N	1
-220A	417T4256-3		.LATCH ASSY-DOOR	P,R,S ,U,Y, Z	1

35-21-21

ILLUSTRATED PARTS LIST

01.1

Page 1032

Jul 01/98


BOEING
 COMPONENT
 MAINTENANCE MANUAL

FIG. & ITEM	PART NO.	AIRLINE PART NUMBER	NOMENCLATURE 1234567	EFF CODE	QTY PER ASSY
01-					
225	NAS602-6		ATTACHING PARTS .SCREW	A-C,F ,J,L, N,P,R ,S,U, Y,Z	3
-225A 230	BACS12FA08C6 AN960-8		DELETED .WASHER	A-C,F ,J,L, N	3
-230A	NAS1149FN832P		.WASHER	P,R,S ,U	3
R -230B	NAS1149DN832J		.WASHER -----*	Y,Z	3
235	MS20253-2-775		..PIN-HINGE	A-C,F ,J,L, N,P,R ,S,U, Y,Z	1
240	417T4303-2		..SPRING	A-C,F ,J,L, N,P,R ,S,U, Y,Z	1
245	417T4302-1		..MOUNT ASSY	A-C,F ,J,L, N,P,R ,S,U, Y,Z	1

35-21-21

ILLUSTRATED PARTS LIST

01.1

Page 1033

Jul 01/98

FIG. & ITEM	PART NO.	AIRLINE PART NUMBER	NOMENCLATURE 1234567	EFF CODE	QTY PER ASSY
01-246	417T4302-4		...MOUNT	A-C,F ,J,L, N,P,R ,S,U, Y,Z	1
247	6035-2BR0185		...INSERT- (V01556)	A-C,F ,J,L, N,P,R ,S,U, Y,Z	3
250	417T4302-2		..LATCH	A-C,F ,J,L, N	1
-250A	417T4302-5		..LATCH	P,R,S ,U,Y, Z	1
255	MS35489-1X		.GROMMET	A-C,F ,J,L, N,P,R ,S,U, Y,Z	1
260	MS35489-4X		.GROMMET- (OPT ITEM 260A)	A-C,F ,J,L, N,P,R ,S,U, Y	2
-260A	Z2318		.GROMMET- (V76385) (OPT ITEM 260)	A-C,F ,J,L, N,P,R ,S,U, Y	2
R -260B	MS35489-4X		.GROMMET	Z	2
261	MS35489-6X		DELETED		
262	417N3138-14		DELETED		
			ATTACHING PARTS		
263	NAS602-6		DELETED		
263A	MS51861-35		DELETED		
263J	AN960-8		DELETED		
264	417N3138-15		DELETED		
264J	417N3138-16		DELETED		
265	417T4252-1		.BOX ASSY	A-C,F ,J,L, N,P,R ,S,U, Y,Z	1

35-21-21

 ILLUSTRATED PARTS LIST
 01.1 Page 1034
 Jul 01/98

BOEING
 COMPONENT
 MAINTENANCE MANUAL

FIG. & ITEM	PART NO.	AIRLINE PART NUMBER	NOMENCLATURE 1234567	EFF CODE	QTY PER ASSY
01- -265A 270 270A	417T4252-14 A3-25 AJ3-25		DELETED DELETED .STUD- (V72794)	A-C,F ,J,L, N,P,R ,S,U, Y,Z	4
275	N03		.RING- (V72794)	A-C,F ,J,L, N,P,R ,S,U, Y,Z	4
275A 280	3 417T4252-7		DELETED ..ANGLE	A-C,F ,J,L, N,P,R ,S,U, Y,Z	2
285	BACR15BB4AD		..RIVET- (SIZE DETERMINE ON INST)	A-C,F ,J,L, N,P,R ,S,U, Y,Z	6
290	417T4252-4		-----*----- ..GUIDE	A-C,F ,J,L, N,P,R ,S,U, Y,Z	1
295	BACR15BA3AD		ATTACHING PARTS ..RIVET- (SIZE DETERMINE ON INST)	A-C,F ,J,L, N,P,R ,S,U, Y,Z	3
300	BACR15BB3AD		..RIVET- (SIZE DETERMINE ON INST) -----*-----	A-C,F ,J,L, N,P,R ,S,U, Y,Z	2

35-21-21

ILLUSTRATED PARTS LIST
 01.1 Page 1035
 Jul 01/98

FIG. & ITEM	PART NO.	AIRLINE PART NUMBER	NOMENCLATURE 1234567	EFF CODE	QTY PER ASSY
01-305	417T4252-6		..DIVIDER	A-C,F ,J,L, N,P,R ,S,U, Y,Z	1
-305A	417T4252-10		DELETED ATTACHING PARTS		
310	BACR15BB3AD		..RIVET- (SIZE DETERMINE ON INST)	A-C,F ,J,L, N,P,R ,S,U, Y,Z	3
315	BACR15BA3AD		..RIVET- (SIZE DETERMINE ON INST)	A-C,F ,J,L, N,P,R ,S,U, Y,Z	2
320	417T4252-5		-----*----- ..CAP	A-C,F ,J,L, N,P,R ,S,U, Y,Z	1
-320A	417T4252-13		DELETED ATTACHING PARTS		
325	BACR15BB3AD		..RIVET- (SIZE DETERMINE ON INST) -----*-----	A-C,F ,J,L, N,P,R ,S,U, Y,Z	15

35-21-21

 ILLUSTRATED PARTS LIST
 01.1 Page 1036
 Jul 01/98


BOEING
 COMPONENT
 MAINTENANCE MANUAL

FIG. & ITEM	PART NO.	AIRLINE PART NUMBER	NOMENCLATURE 1234567	EFF CODE	QTY PER ASSY
01-330	417T4252-2		..CAP	A-C,F ,J,L, N,P,R ,S,U, Y,Z	1
335 340	BACR15BA3AD BACR15BB3AD		ATTACHING PARTS DELETED ..RIVET- (SIZE DETERMINE ON INST)	A-C,F ,J,L, N,P,R ,S,U, Y,Z	11
345	417T4252-3		-----*----- ..WEB	A-C,F ,J,L, N,P,R ,S,U, Y,Z	1
350	BAC27TPPS6319		.MARKER-ALUMINUM FOIL	P,S,U ,Y,Z	1

- Item Not Illustrated

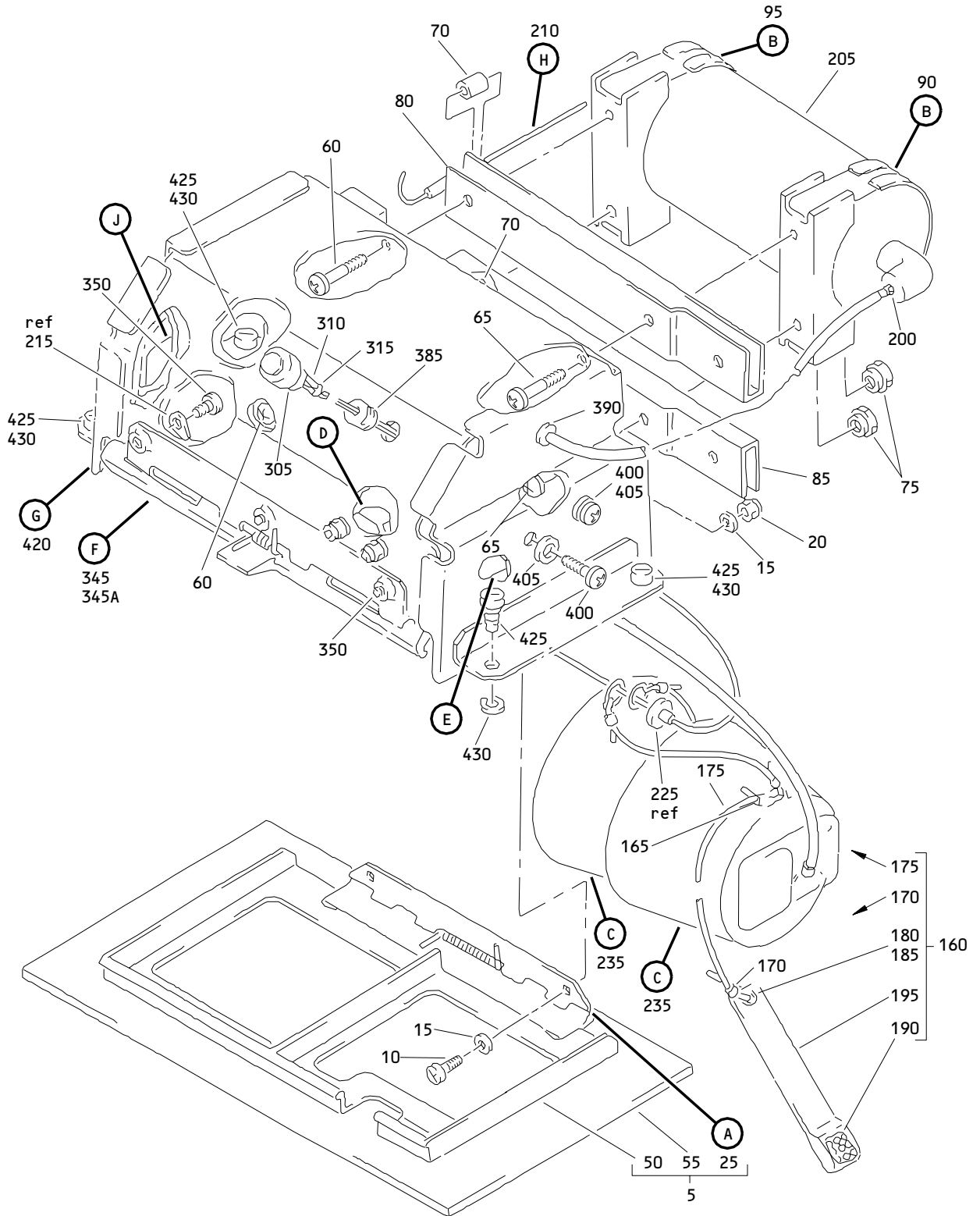
35-21-21

ILLUSTRATED PARTS LIST

01.1

Page 1037

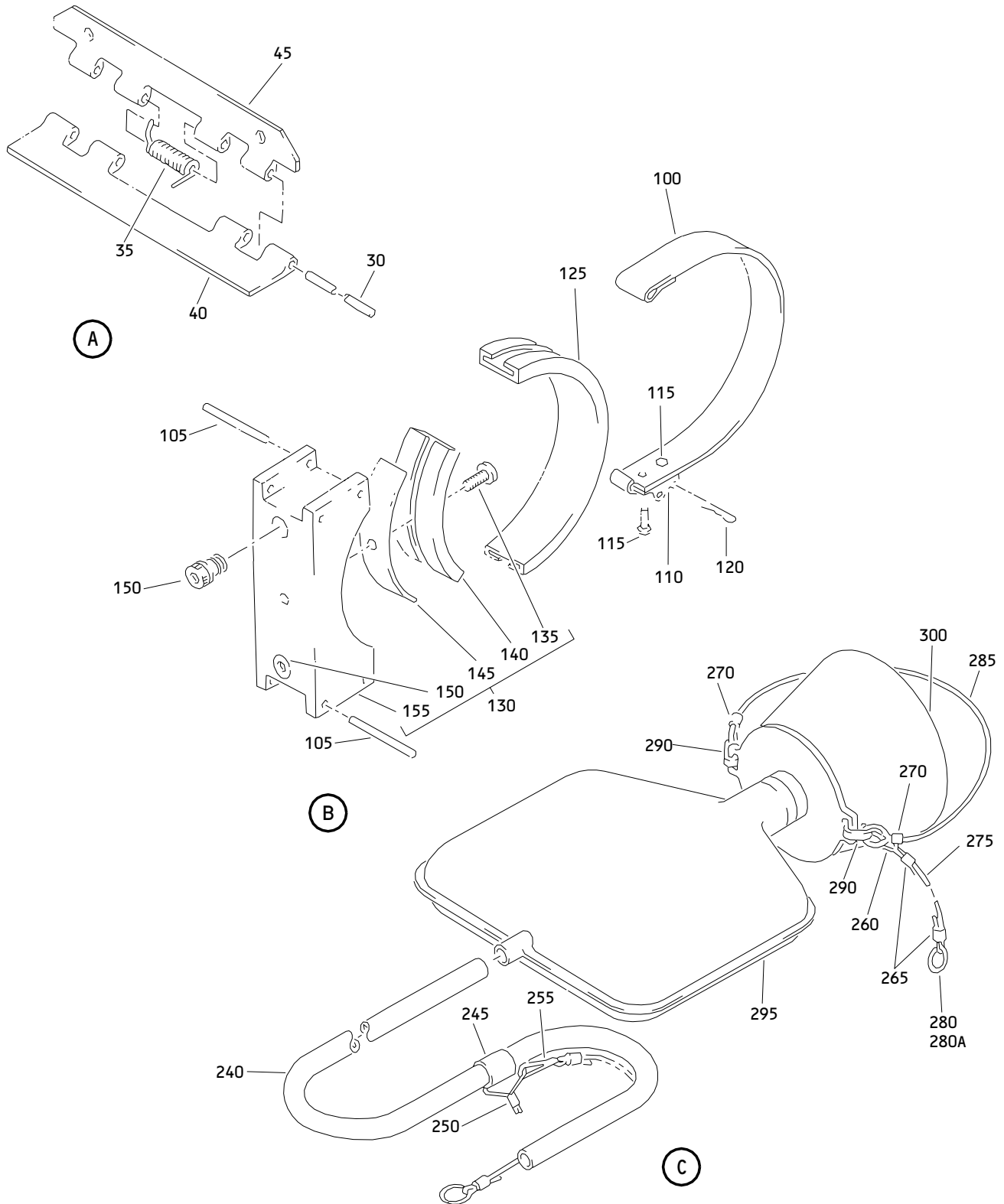
Jul 01/98



Lavatory and Flight Attendant Oxygen Module Assembly
 Figure 2 (Sheet 1)

35-21-21

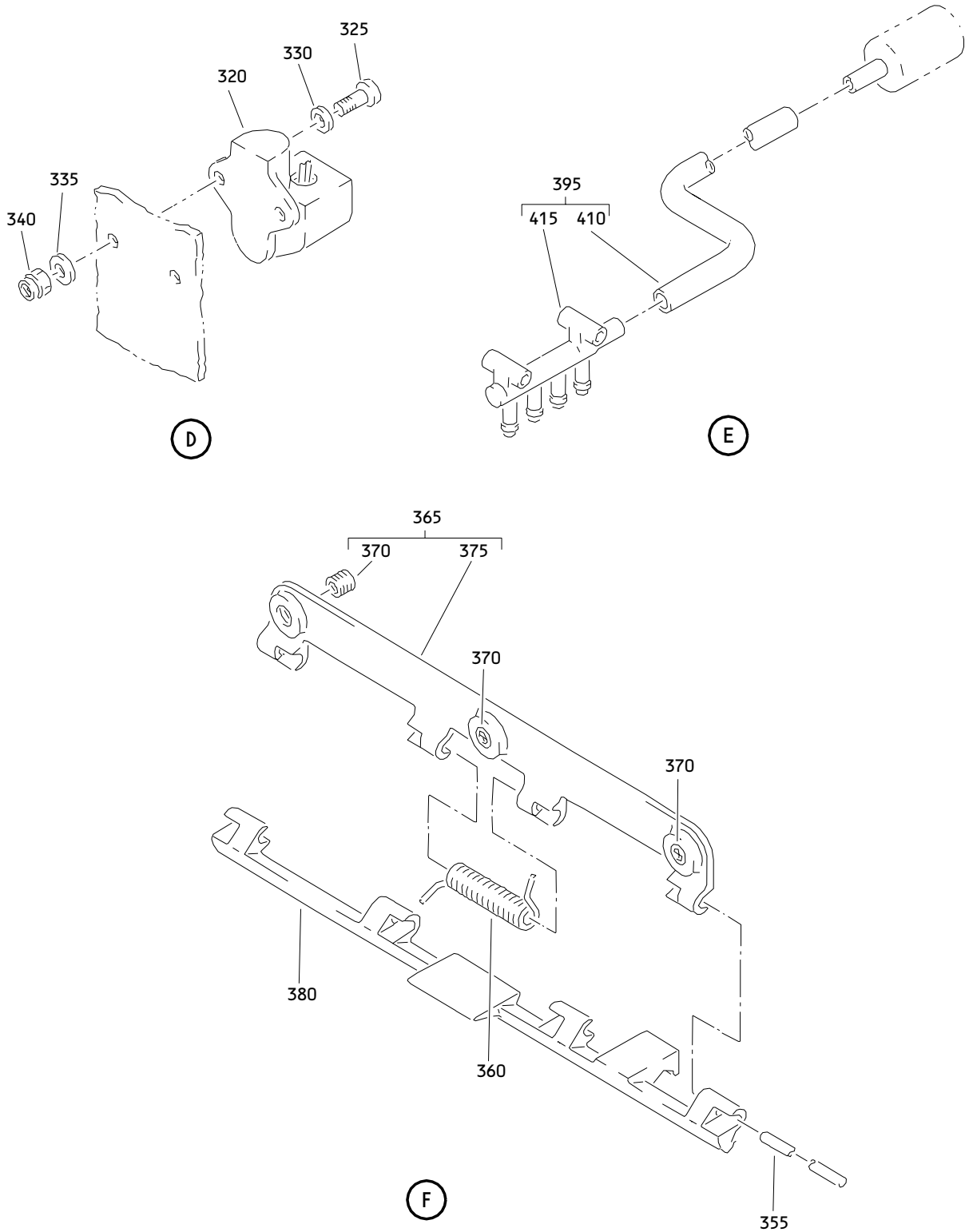
ILLUSTRATED PARTS LIST
 01.1 Page 1039
 Jul 01/98



Lavatory and Flight Attendant Oxygen Module Assembly
 Figure 2 (Sheet 2)

35-21-21

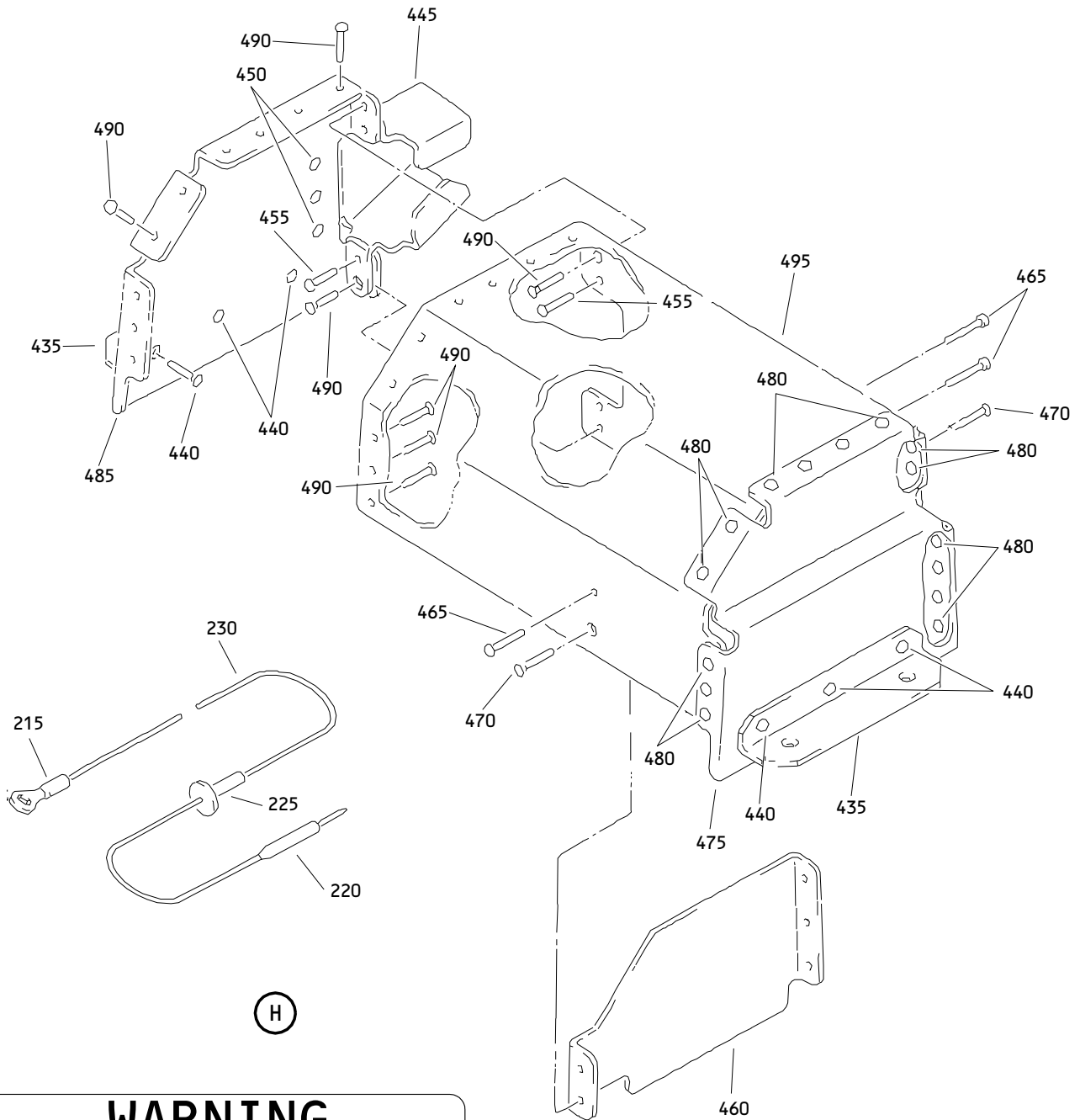
ILLUSTRATED PARTS LIST
 01.1 Page 1040
 Jul 01/98



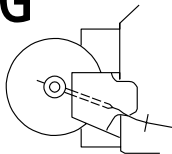
Lavatory and Flight Attendant Oxygen Module Assembly
Figure 2 (Sheet 3)

35-21-21

ILLUSTRATED PARTS LIST
01.1 Page 1041
Jul 01/98



WARNING
 ROUTE RELEASE CABLE
 THROUGH BRACKET CENTER
 AS SHOWN. OTHER ROUTING
 PREVENTS FLOW OF OXYGEN.
 (SEE MM 35-21)



Lavatory and Flight Attendant Oxygen Module Assembly
 Figure 2 (Sheet 4)

35-21-21

ILLUSTRATED PARTS LIST
 01.1 Page 1042
 Jul 01/98


BOEING
 COMPONENT
 MAINTENANCE MANUAL

FIG. & ITEM	PART NO.	AIRLINE PART NUMBER	NOMENCLATURE 1234567	EFF CODE	QTY PER ASSY
02-					
-1A	417T4202-3SP		MODULE ASSY-OXY, LAV AND FLIGHT ATTENDANT	D	RF
-1B	417T4202-8SP		MODULE ASSY-OXY, LAV AND FLIGHT ATTENDANT	E	RF
-1C	417T4202-103SP		MODULE ASSY-OXY, LAV AND FLIGHT ATTENDANT	G	RF
-1D	417T4202-108SP		MODULE ASSY-OXY, LAV AND FLIGHT ATTENDANT	H	RF
-1E	417T4202-203SP		MODULE ASSY-OXY, LAV AND FLIGHT ATTENDANT	K	RF
-1F	417T4202-208SP		MODULE ASSY-OXY, LAV AND FLIGHT ATTENDANT	M	RF
-1G	417T4202-408SP		DELETED		
-1H	417T4202-403SP		MODULE ASSY-OXY, LAV AND FLIGHT ATTENDANT	Q	RF
-1J	417T4202-413SP		MODULE ASSY-OXY, LAV AND FLIGHT ATTENDANT	T	RF
R -1K	417T4202-423SP		MODULE ASSY-OXY, LAV AND FLIGHT ATTENDANT	X	RF
5	417T4251-2SP		.PANEL ASSY-DOOR	E,M	1
-5A	417T4251-11SP		.PANEL ASSY-DOOR	G,Q,T,X	1
-5B	417T4251-12SP		.PANEL ASSY-DOOR	H	1
-5C	417T4251-32SP		.PANEL ASSY-DOOR	P	1
-5D	417T4251-1SP		.PANEL ASSY-DOOR	D,K	1
10	NAS601-6		ATTACHING PARTS .SCREW	D,E,G,H,K,M,Q,T,X	2
15	AN960-6		.WASHER	D,E,G,H,K,M,Q,T	4
R -15A	NAS1149DN632J		-----*----- .WASHER	X	4

35-21-21

 ILLUSTRATED PARTS LIST
 01.1 Page 1043
 Jul 01/98

FIG. & ITEM	PART NO.	AIRLINE PART NUMBER	NOMENCLATURE 1234567	EFF CODE	QTY PER ASSY
02-					
20	H10-06BAC		ATTACHING PARTS .NUT- (V15653) (SPEC BACN10JC06) (OPT RMLH9075-62W (V72962)) (OPT T6S632J (V11815)) (OPT VN303A62 (V92215)) (OPT 96-62 (V80539)) (OPT BRH10A06 (V52828)) (OPT NS202101-62 (V80539)) -----*-----	D,E,G ,H,K, M,Q,T ,X	2
25	417T4257-1		..HINGE ASSY	D,E,G ,H,K, M,Q,T ,X	1
30	MS20253P2-550		...PIN	D,E,G ,H,K, M,Q,T ,X	1
35	417T4303-3		...SPRING	D,E,G ,H,K, M,Q,T ,X	1
40	417T4257-2		...HINGE HALF	D,E,G ,H,K, M,Q,T ,X	1
45	417T4257-3		...HINGE HALF	D,E,G ,H,K, M,Q,T ,X	1
50	417T4300-1		..STRIKE	D,E,G ,H,K, M,Q,T ,X	1
55	417T4305-2SP		..PANEL	E,M	1
-55A	417T4305-11SP		..PANEL	G,Q,T ,X	1
-55B	417T4305-12SP		..PANEL	H	1

35-21-21

 ILLUSTRATED PARTS LIST
 01.1 Page 1044
 Jul 01/98


BOEING
 COMPONENT
 MAINTENANCE MANUAL

FIG. & ITEM	PART NO.	AIRLINE PART NUMBER	NOMENCLATURE 1234567	EFF CODE	QTY PER ASSY
02-					
-55C	417T4305-32SP		..PANEL	P	1
-55D	417T4305-1SP		..PANEL	D,K	1
60	BACS12FA3C13		.SCREW	D,E,G	2
				,H,K,	
				M,Q,T	
R -60A	NAS603-13		.SCREW	X	2
65	BACS12FA3C6		.SCREW	D,E,G	4
				,H,K,	
				M,Q,T	
R -65A	NAS603-6		.SCREW	X	4
70	NAS43DD3-24		.SPACER	D,E,G	2
				,H,K,	
				M,Q,T	
R 72	NAS1149D0332J		.WASHER	X	6
75	H10-3BAC		.NUT-	D,E,G	2
			(V15653)	,H,K,	
			(SPEC BACN10JC3)	M,Q,T	
			(OPT NS202101-02	,X	
			(V80539))		
			(OPT RMLH9075-3W		
			(V72962))		
			(OPT T6S1032J		
			(V71087))		
			(OPT VN303A02		
			(V92215))		
			(OPT 96-02		
			(V80539))		
			(OPT BRH10A3		
			(V52828))		

35-21-21

ILLUSTRATED PARTS LIST

01.1

Page 1045

Jul 01/98

FIG. & ITEM	PART NO.	AIRLINE PART NUMBER	NOMENCLATURE 1234567	EFF CODE	QTY PER ASSY
02-80	417T4317-1		.SUPPORT-CHANNEL	D,E,G ,H,K, M,Q,T ,X	1
85	417T4317-2		.SUPPORT-CHANNEL	D,E,G ,H,K, M,Q,T ,X	1
90	417T4250-1		.CLAMP ASSY	D,E,G ,H,K, M,Q,T ,X	1
95	417T4250-2		.CLAMP ASSY	D,E,G ,H,K, M,Q,T ,X	1
100	417T4250-7		..STRAP	D,E,G ,H,K, M,Q,T ,X	2
105	5-64X11-8MDP		..PIN- (V00287) (OPT ITEMS 105A, 105B)	D,E,G ,H,K, M,Q,T ,X	2
-105A	MS39086-26		..PIN-SPR (OPT ITEMS 105, 105B)	D,E,G ,H,K, M,Q,T ,X	2
-105B	CZ0781125		..PIN-SPR (VONHT3) (OPT ITEMS 105, 105A)	D,E,G ,H,K, M,Q,T ,X	2

35-21-21

ILLUSTRATED PARTS LIST

01.1

Page 1046

Jul 01/98


BOEING
 COMPONENT
 MAINTENANCE MANUAL

FIG. & ITEM	PART NO.	AIRLINE PART NUMBER	NOMENCLATURE 1234567	EFF CODE	QTY PER ASSY
02-110	30L20-2AA		..LATCH- (V29372)	D,E,G ,H,K, M,Q,T ,X	1
115	BACR15BB3AD2		..RIVET	D,E,G ,H,K, M,Q,T ,X	2
120	AN415-4		..PIN-LOCK	D,E,G ,H,K, M,Q,T ,X	1
125	417T4250-6		..COVER-STRAP	D,E,G ,H,K, M,Q,T ,X	1
130	417T4255-1		..BLOCK ASSY	D,E,G ,H,K, M,Q,T ,X	1
135	MS21207C4-4		...SCREW	D,E,G ,H,K, M,Q,T ,X	1
140	417T4255-4		...COVER-STRAP	D,E,G ,H,K, M,Q,T ,X	1
145	417T4255-3		...STRAP	D,E,G ,H,K, M,Q,T ,X	1
150	6041-3BR0375		...INSERT- (V01556)	D,E,G ,H,K, M,Q,T ,X	2
155	417T4255-2		...BLOCK	D,E,G ,H,K, M,Q,T	1

35-21-21

ILLUSTRATED PARTS LIST

01.1

Page 1047

Jul 01/98

FIG. & ITEM	PART NO.	AIRLINE PART NUMBER	NOMENCLATURE 1234567	EFF CODE	QTY PER ASSY
02-160	417T4263-1		.STREAMER ASSY	D,G,K ,Q,T	1
R -160A	417T4263-6		.STREAMER ASSY ATTACHING PARTS	X	1
165	MS51844-82		.SLEEVE	D,G,K ,Q,T, X	1
			-----*-----		
170	MS51844-82		..SLEEVE	D,G,K ,Q,T	1
R 172	MS51844-82		..SLEEVE	X	2
175	417T4263-2		..CORD	D,G,K ,Q,T	1
R -175A	417T4263-8		..CORD	X	1
180	MS20230GBP10		..GROMMET	D,G,K ,Q,T, X	1
185	MS20230WBP10		..WASHER	D,G,K ,Q,T, X	1
190	69-50420-4		..WEIGHT-SHOT	D,G,K ,Q,T	16
R 192	417T4263-9		..WEIGHT-CURTAIN	X	1
195	69-50420-2		..STREAMER	D,G,K ,Q,T	1
R -195A	417T4263-7		..STREAMER	X	1
200	70-505R		.CLAMP-CIRCLE (V25281)	D,E,G ,H,K, M,Q,T	1
R 200A	70-505RD		.CLAMP-CIRCLE (V25281)	X	1
205	117003-22		.GENERATOR-3 PERSON (V16827) (SPEC S417T401-22)	D,E,G ,H,K, M,Q,T ,X	1
210	417T4262-1		.CABLE ASSY-RELEASE (LIMITED) (OPT ITEM 210A)	G,H	1

35-21-21

 ILLUSTRATED PARTS LIST
 01.1 Page 1048
 Jul 01/98


BOEING
 COMPONENT
 MAINTENANCE MANUAL

FIG. & ITEM	PART NO.	AIRLINE PART NUMBER	NOMENCLATURE 1234567	EFF CODE	QTY PER ASSY
02- -210A	417T4262-3		.CABLE ASSY-RELEASE (LIMITED) (OPT ITEM 210)	G,H	1
-210B	417T4262-1		.CABLE ASSY-RELEASE (OPT ITEM 210C)	Q	1
-210C	417T4262-3		.CABLE ASSY-RELEASE (OPT ITEM 210B)	Q	1
-210D	417T4262-1		.CABLE ASSY-RELEASE	D,E,K ,M	1
-210E	417T4262-3		.CABLE ASSY-RELEASE	T,X	1
215	MS20659-102		..TERMINAL-CABLE (OPT ITEM 215A)	D,E,G ,H,K, M,Q,T ,X	1
-215A	A87		..TERMINAL-CABLE (V59730) (OPT ITEM 215)	D,E,G ,H,K, M,Q,T ,X	1
220	417T4307-1		..PIN- (USED ON ITEMS 210 210B, 210D)	D,E,G ,H,K, M,Q	1
-220A	417T4307-2		..PIN- (USED ON ITEMS 210A 210C, 210E)	G,H,Q ,T,X	1
225	417T4308-1		..STOP-LANYARD	D,E,G ,H,K, M,Q,T ,X	1
230	417T4262-2		..ROPE-WIRE	D,E,G ,H,K, M,Q,T ,X	1

35-21-21

ILLUSTRATED PARTS LIST

01.1

Page 1049

Jul 01/98

FIG. & ITEM	PART NO.	AIRLINE PART NUMBER	NOMENCLATURE 1234567	EFF CODE	QTY PER ASSY
02-					
235	417T4205-41		.MASK ASSY-PASS.	D	2
-235A	417T4205-52		.MASK ASSY-PASS.	E	2
-235B	417T4205-141		.MASK ASSY-PASS.	G,K,Q	2
-235C	417T4205-152		.MASK ASSY-PASS.	H,M	2
-235D	417T4205-196		.MASK ASSY-PASS.	T	2
R -235E	S418W001-110		.MASK ASSY-PASS.	X	2
240	417T4205-12		..TUBING	D,E,G ,H,K, M,Q,T	1
245	417T4205-11		..RETAINER-LOOP	E,H,M	1
250	417T4205-50		..CLAMP	E,H,M ,T	1
255	417T4205-49		..LOOP	E,H,M	1
260	N0318		..SNAPHOOK- (V82399)	D,E,G ,H,K, M,Q,T	1
-260A	417T4205-96		..RING- (OPT ITEM 260A)	D,E,G ,H,K, M,Q,T	1
265	417T4205-50		..CLAMP-LANYARD	D,E,G ,H,K, M,Q,T	2
270	417T4205-7		..CLAMP-HEAD STRAP	D,E,G ,H,K, M,Q,T	2
275	417T4205-47		..LANYARD	D,E,G ,H,K, M,Q	1
-275A	417T4205-106		..LANYARD	T	1
280	417T4205-26		..RING	D,E	1

35-21-21

ILLUSTRATED PARTS LIST

01.1

Page 1050

Jul 01/98


BOEING
 COMPONENT
 MAINTENANCE MANUAL

FIG. & ITEM	PART NO.	AIRLINE PART NUMBER	NOMENCLATURE 1234567	EFF CODE	QTY PER ASSY
02-280A	417T4205-96		..RING- (OPT ITEM 280B)	G,H,K ,M,Q	1
-280B	318		..SNAPHOOK- (V82399) (OPT ITEM 280A)	G,H,K ,M,Q	1
-280C	417T4205-34		..EYELET	T	1
285	417T4205-6		..STRAP-HEAD	D,E,G ,H,K, M,Q,T	1
290	417T4205-32		..CLIP-HEAD STRAP	D,E,G ,H,K, M,Q,T	2
295	417T4205-9		..BAG	D,E,G ,H,K, M,Q,T	1
300	417T4205-8		..MASK	D,E,G ,H,K, M,Q,T	1
305	C0909A08-02PN		.CONNECTOR- (V13556) (SPEC BACC63BN8-2P) (OPT 48-63N8-2P (V02660))	D,E,G ,H,K, M,Q,T ,X	1
310	BACC10GH08		.CLAMP	D,E,G ,H,K, M,Q,T ,X	1
315	TY25M		.STRAP- (V59730) (SPEC STBS38G3) (OPT ITEMS 315A, 315B)	D,E,G ,H,K, M,Q	1
-315A	PLT4HTL		.STRAP- (V06383) (SPEC BACS38K3) (OPT T012R0 (V53421)) (OPT ITEMS 315, 315B)	D,E,G ,H,K, M,Q	1
-315B	TY525M		.CLAMP- (V06383) (OPT ITEMS 315, 315A)	D,E,G ,H,K, M,Q	1
-315C	PLT4HTL		.STRAP- (V06383) (SPEC BACS38K3) (OPT T012R0 (V53421))	T,X	1

35-21-21

ILLUSTRATED PARTS LIST

01.1

Page 1051

Jul 01/98

FIG. & ITEM	PART NO.	AIRLINE PART NUMBER	NOMENCLATURE 1234567	EFF CODE	QTY PER ASSY
02-320	78175-3		.ACTUATOR-DOOR LATCH (V09790) (SPEC S417T402-3) (OPT ITEM 320A)	D,E,G ,H,K, M,Q	1
-320A	78175-4		.ACTUATOR-DOOR LATCH (V09790) (SPEC S417T402-4) (OPT ITEM 320)	D,E,G ,H,K, M,Q	1
-320B	78175-4		.ACTUATOR-DOOR LATCH (V09790) (SPEC S417T402-4)	T,X	1
325	NAS601-6		ATTACHING PARTS .SCREW	D,E,G ,H,K, M,Q,T ,X	2
330	NAS620-6		.WASHER	D,E,G ,H,K, M,Q,T ,X	2
335	AN960-6		.WASHER	D,E,G ,H,K, M,Q,T ,X	2
R -335A	NAS1149DN632J		.WASHER	X	2
340	H10-06BAC		.NUT- (V15653) (SPEC BACN10JC06) (OPT RMLH9075-62W (V72962)) (OPT T6S632J (V11815)) (OPT VN303A62 (V92215)) (OPT 96-62 (V80539)) (OPT BRH10A06 (V52828)) (OPT NS202101-62 (V80539))	D,E,G ,H,K, M,Q,T ,X	2
345	417T4256-1		-----*----- .LATCH ASSY-DOOR	D,E,G ,H,K, M	1
345A	417T4256-3		.LATCH ASSY-DOOR ATTACHING PARTS	Q,T,X	1

35-21-21

ILLUSTRATED PARTS LIST

01.1

Page 1052

Jul 01/98


BOEING
 COMPONENT
 MAINTENANCE MANUAL

FIG. & ITEM	PART NO.	AIRLINE PART NUMBER	NOMENCLATURE 1234567	EFF CODE	QTY PER ASSY
02-350	BACS12FA08C6		. SCREW	D,E,G ,H,K, M,Q,T	3
R -350A	NAS602-6		. SCREW -----*-----	X	3
R 352	NAS1149DN832J		. WASHER	X	3
355	MS20253-2-775		.. PIN-HINGE	D,E,G ,H,K, M,Q,T ,X	1
360	417T4303-2		.. SPRING	D,E,G ,H,K, M,Q,T ,X	1
365	417T4302-1		.. MOUNT ASSY	D,E,G ,H,K, M,Q,T ,X	1
370	6035-2BR0185		... INSERT	D,E,G ,H,K, M,Q,T ,X	3
375	417T4302-4		... MOUNT	D,E,G ,H,K, M,Q,T ,X	1
380	417T4302-2		.. LATCH	D,E,G ,H,K, M	1
-380A	417T4302-5		.. LATCH	Q,T,X	1
385	MS35489-1X		. GROMMET	D,E,G ,H,K, M,Q,T ,X	1

35-21-21

ILLUSTRATED PARTS LIST

01.1

Page 1053

Jul 01/98

FIG. & ITEM	PART NO.	AIRLINE PART NUMBER	NOMENCLATURE 1234567	EFF CODE	QTY PER ASSY
02-390	MS35489-6X		.GROMMET	D,E,G ,H,K, M,Q,T ,X	1
395	417N3138-14		.LINE ASSY-SUPPLY	D,E,G ,H,K, M,Q,T ,X	1
400	MS51861-35		ATTACHING PARTS .SCREW	D,E,G ,H,K, M,Q,T ,X	2
405	AN960-8		.WASHER	D,E,G ,H,K, M,Q,T X	2
R-405A	NAS1149DN832J		.WASHER -----*	X	2
410	417N3138-15		..HOSE-FLEX	D,E,G ,H,K, M,Q,T ,X	1
415	417N3138-16		..MANIFOLD	D,E,G ,H,K, M,Q,T ,X	1
420	417T4252-14		.BOX ASSY	D,E,G ,H,K, M,Q,T ,X	1
			ATTACHING PARTS		

35-21-21

ILLUSTRATED PARTS LIST

01.1 Page 1054

Jul 01/98

BOEING
 COMPONENT
 MAINTENANCE MANUAL

FIG. & ITEM	PART NO.	AIRLINE PART NUMBER	NOMENCLATURE 1234567	EFF CODE	QTY PER ASSY
02-425	AJ3-25		.STUD- (V72794)	D,E,G ,H,K, M,Q,T ,X	4
430	N03		.RING-SNAP (V72794)	D,E,G ,H,K, M,Q,T ,X	4
435	417T4252-7		-----*----- ..ANGLE	D,E,G ,H,K, M,Q,T ,X	2
440	BACR15BB4AD		ATTACHING PARTS ..RIVET- (SIZE DETERMINE ON INST)	D,E,G ,H,K, M,Q,T ,X	6
445	417T4252-4		-----*----- ..GUIDE	D,E,G ,H,K, M,Q,T ,X	1
450	BACR15BA3AD		ATTACHING PARTS ..RIVET- (SIZE DETERMINE ON INST)	D,E,G ,H,K, M,Q,T ,X	3
455	BACR15BB3AD		..RIVET- (SIZE DETERMINE ON INST)	D,E,G ,H,K, M,Q,T ,X	2
460	417T4252-10		-----*----- ..DIVIDER	D,E,G ,H,K, M,Q,T ,X	1
			ATTACHING PARTS		

35-21-21

ILLUSTRATED PARTS LIST
 01.1 Page 1055
 Jul 01/98

FIG. & ITEM	PART NO.	AIRLINE PART NUMBER	NOMENCLATURE 1234567	EFF CODE	QTY PER ASSY
02-465	BACR15BB3AD		..RIVET- (SIZE DETERMINE ON INST)	D,E,G ,H,K, M,Q,T ,X	3
470	BACR15BA3AD		..RIVET- (SIZE DETERMINE ON INST)	D,E,G ,H,K, M,Q,T ,X	2
475	417T4252-13		-----*----- ..CAP	D,E,G ,H,K, M,Q,T ,X	1
480	BACR15BB3AD		ATTACHING PARTS ..RIVET- (SIZE DETERMINE ON INST)	D,E,G ,H,K, M,Q,T ,X	15
485	417T4252-2		-----*----- ..CAP	D,E,G ,H,K, M,Q,T ,X	1
490	BACR15BB3AD		ATTACHING PARTS ..RIVET- (SIZE DETERMINE ON INST)	D,E,G ,H,K, M,Q,T ,X	11
495	417T4252-3		-----*----- ..WEB	D,E,G ,H,K, M,Q,T ,X	1
500	BAC27TPPS6319		.MARKER-ALUMUINUM FOIL	T,X	1

- Item Not Illustrated

35-21-21

 ILLUSTRATED PARTS LIST
 01.1 Page 1056
 Jul 01/98